

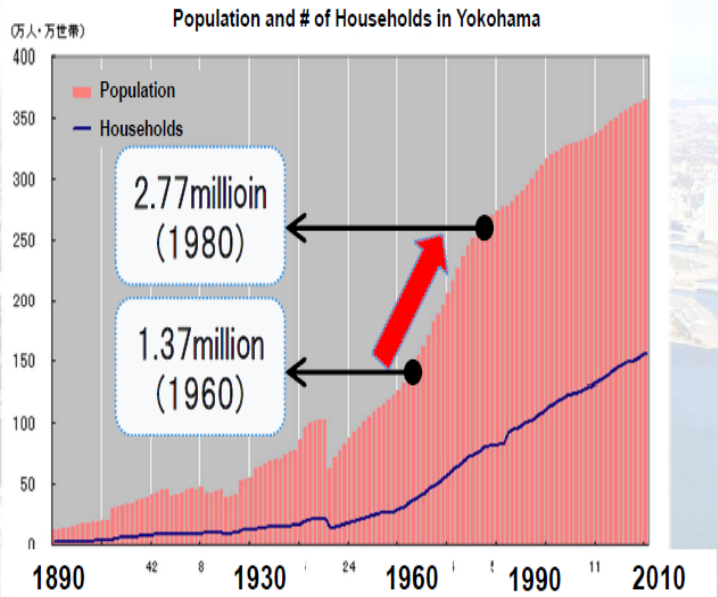


Yokohama Smart City Project

City of Yokohama
Climate Change Policy Headquarters

Overview of Yokohama

City of Yokohama's population trend continuing to expand and grow



Population: 3,700,000



Urban Development in Yokohama City

Rapid population growth and urbanization caused...



Long-Term Urban Development

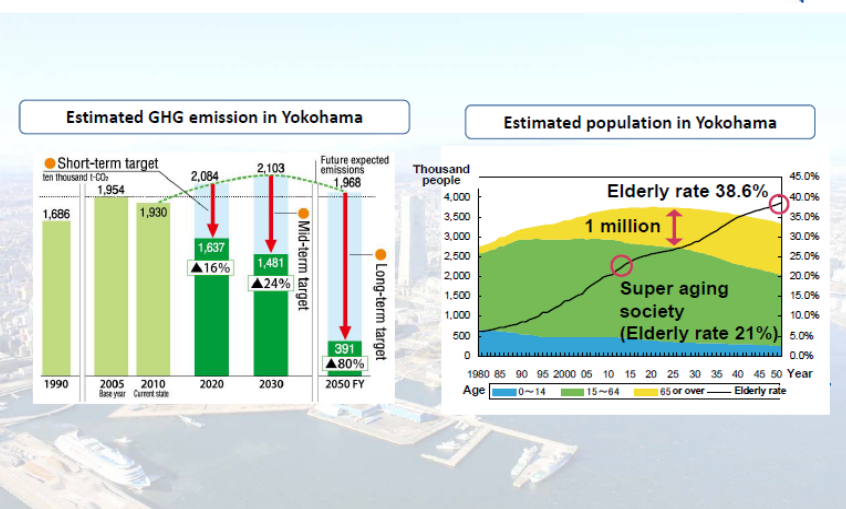


Urban Development in Yokohama City



The 6 strategic
Projects
planned in 1965

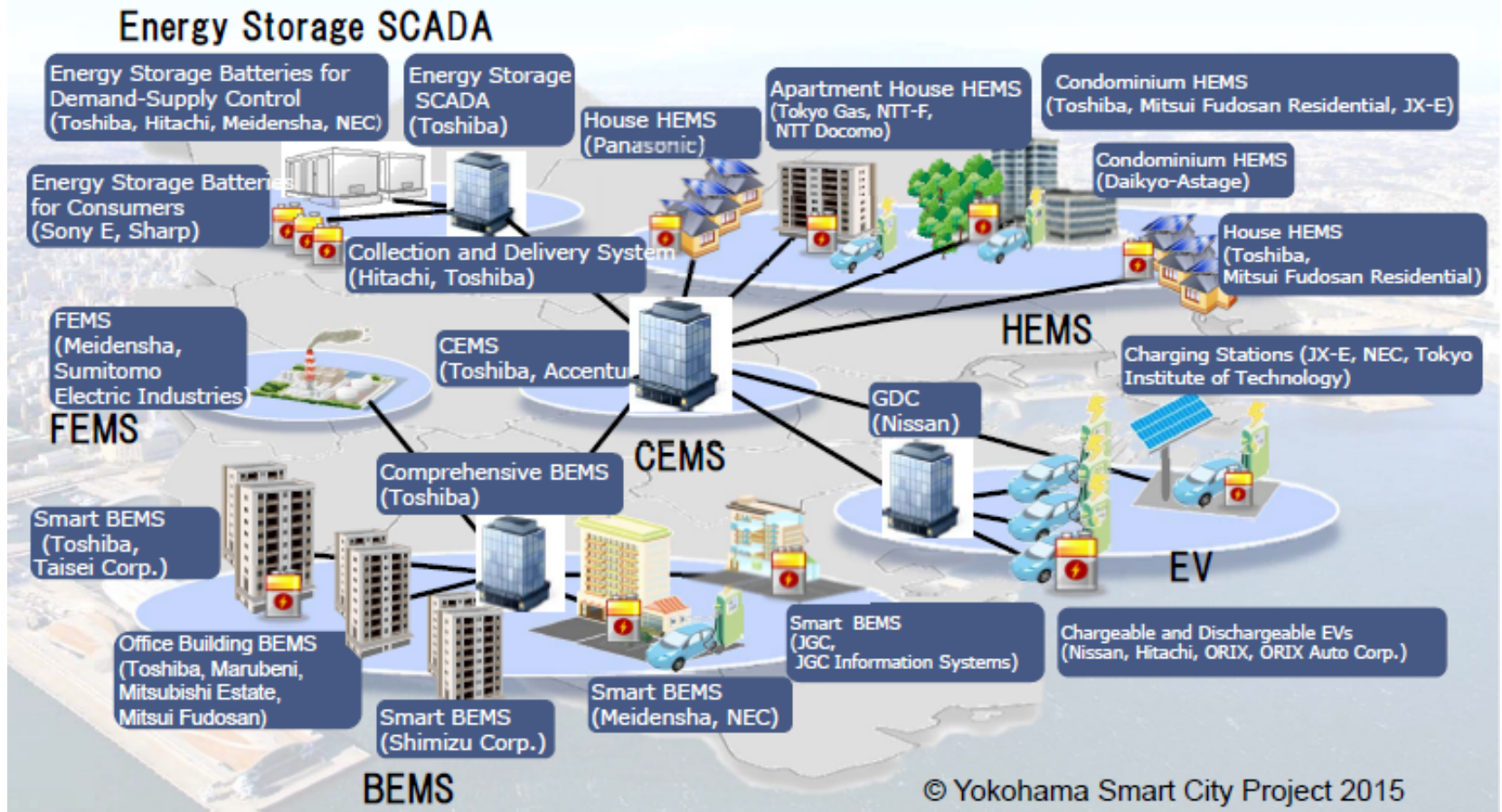
Tackling future problems in Yokohama



Overview of Yokohama Smart City Project

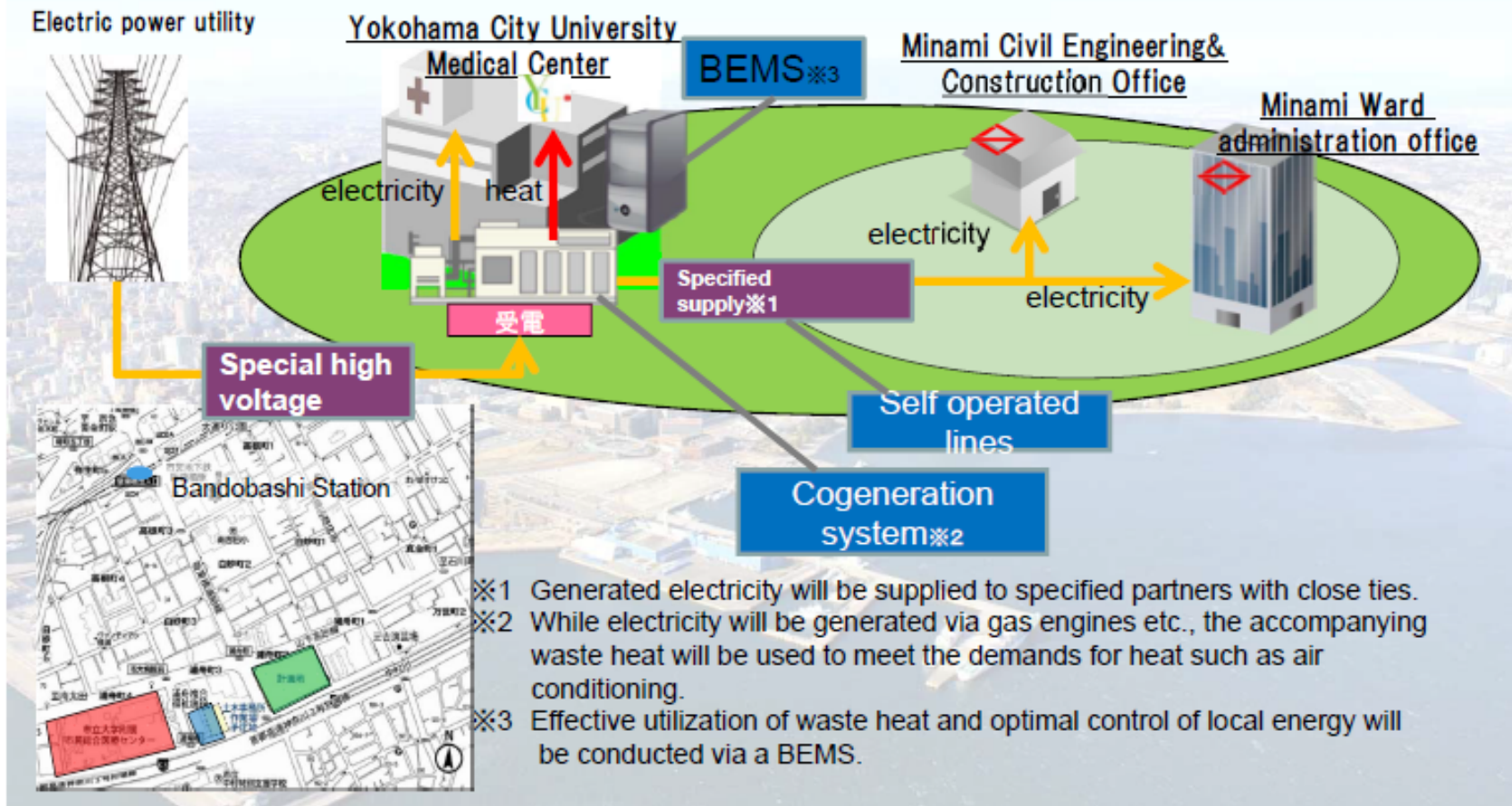
(Coordination between Yokohama City, 34 businesses, and 15 projects)

■ results (To FY2013) / goal (FY2010~FY2014)
HEMS (Home energy management system) (4,200 / 4,000) PV (37MW / 27MW) EV (2,300 / 2,000)



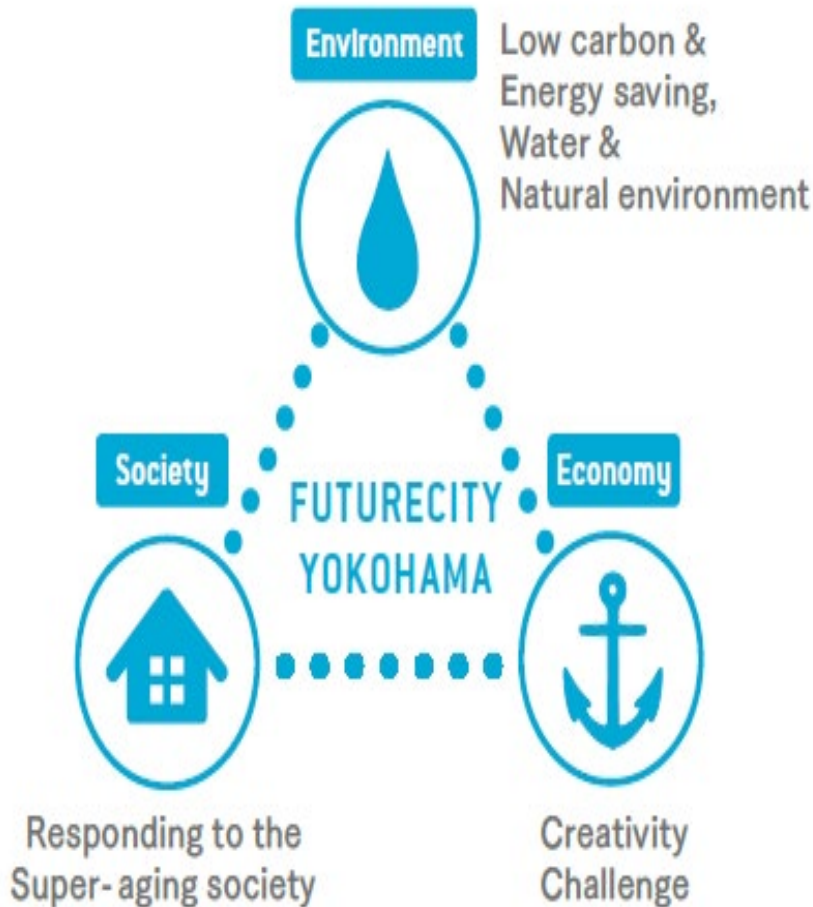
Achievement of community energy management based on specified supply

- Disaster preparedness will be improved through energy cooperation between hospitals and the ward hall.
- By implementing the cogeneration of energy, not only will operations become more efficient but waste heat will be effectively used, thereby reducing CO2 emissions as well as cost.
- Old heat source equipment will be renewed, and optimal energy control will be conducted by a BEMS.



“FutureCity” Initiative Yokohama’s International Corporation –Y-PORT

“FutureCity” Initiative



Yokohama’s International Corporation Y-PORT

Yokohama

Partnership of Resources and Technologies

International technical cooperation based on public-private partnership and drawing on the resources and technology of Yokohama

- It is essential to provide **not simple products but solutions** through combining technologies and knowhow of the public and private sectors

This block contains a collage of images related to the Y-PORT project. At the top right is a photo of a signing ceremony with the text '持続可能な都市発展に向けた技術協力に関する覚書; 締結 Signing Ceremony of Memorandum of Understanding on Technical Cooperation for Sustainable Urban Development'. Below it is a photo of two men shaking hands. To the right is a photo of a meeting around a table. At the bottom is a photo of a factory interior. In the center is a diagram with 'Y-PORT Project' in a central circle, surrounded by three blue ovals: 'Support from central government', 'Knowhow and technologies of the City of Yokohama', and 'Technological capacities of firms in the city'.



Thank you



For Smarter Cities, For a Smarter Earth

