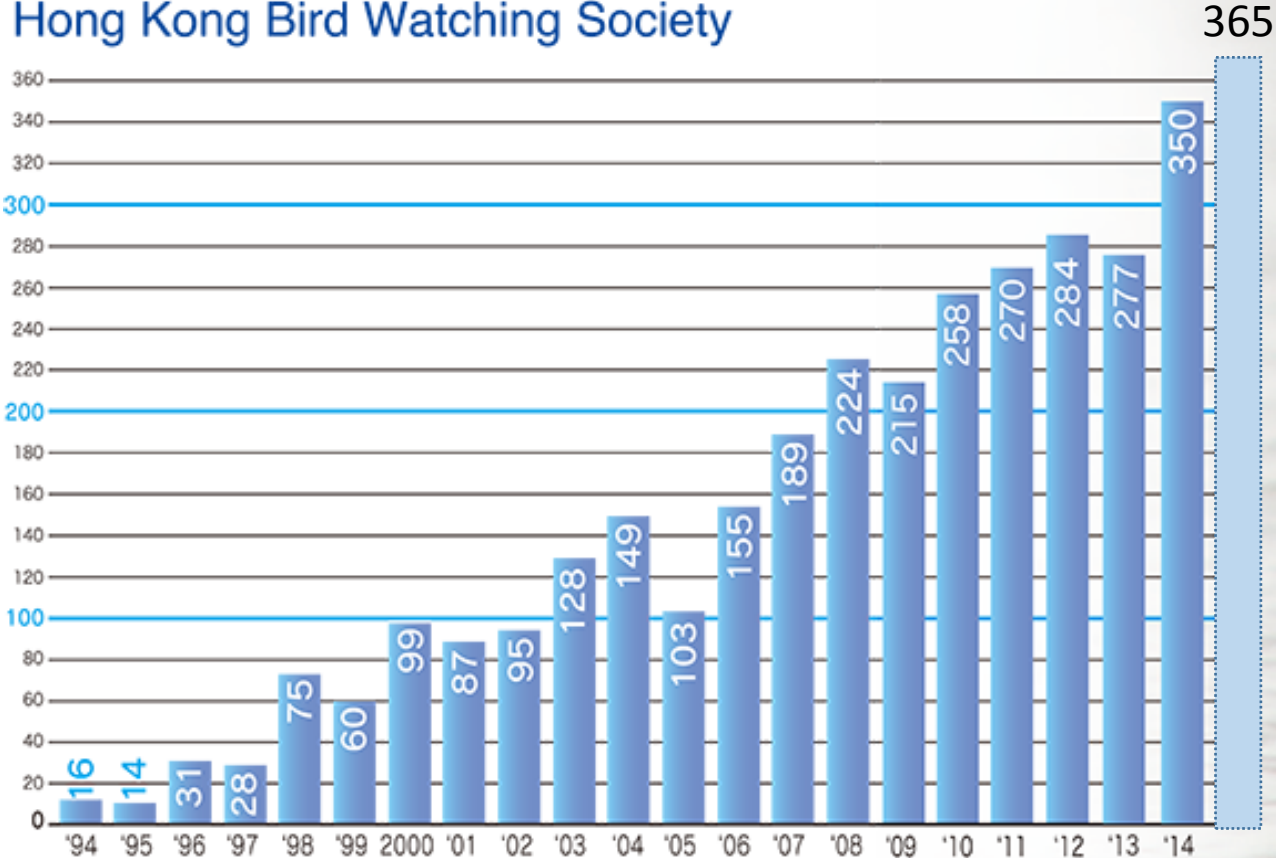


# BFS Number of Japan / Hong Kong Bird Watching Society



cf.  
*P. leucorodia*  
25 birds

Dec. '14

# SCOPING SURVEY FOR THE BLACK-FACED SPOONBILL IN HAKATA BAY

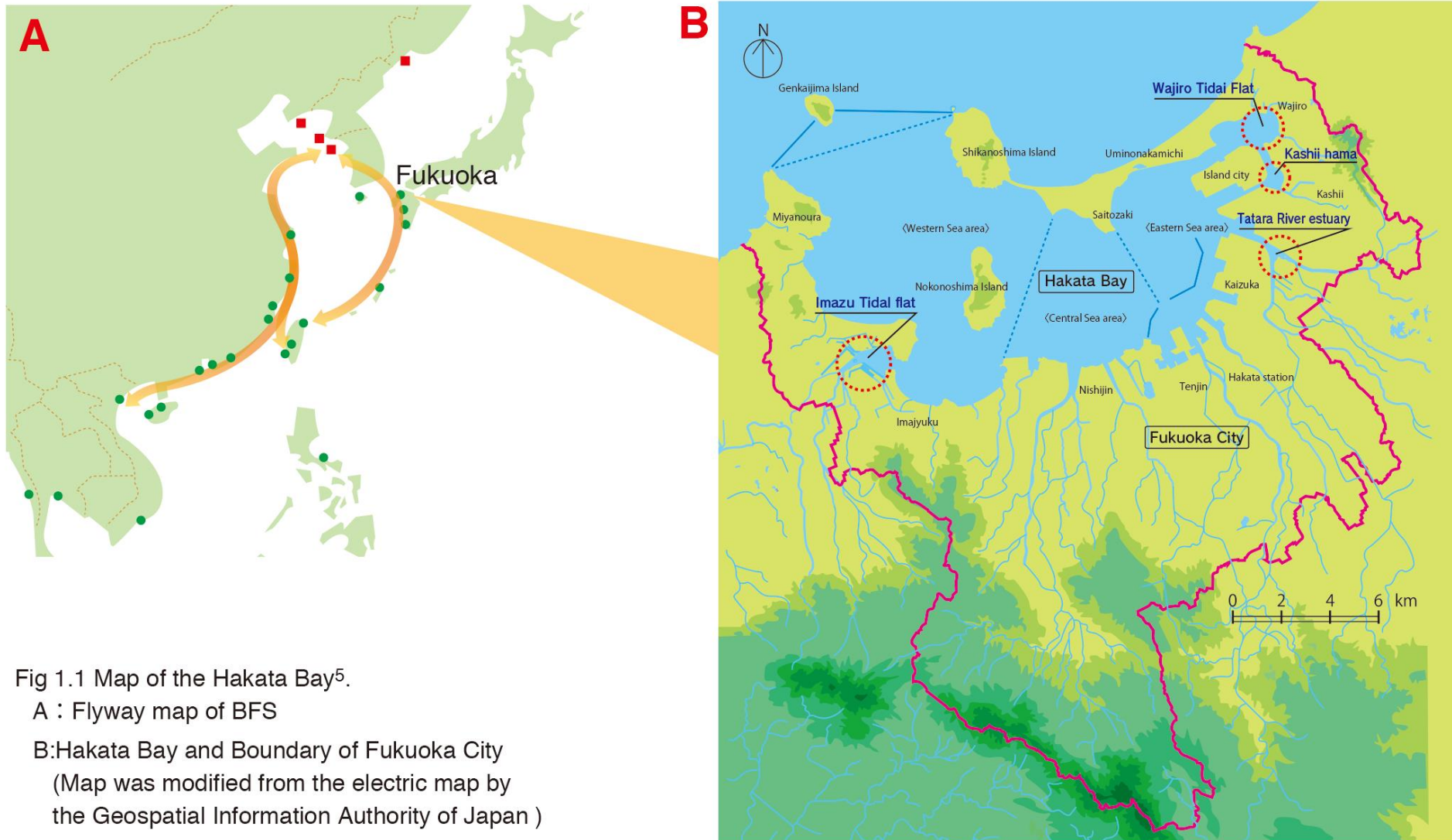


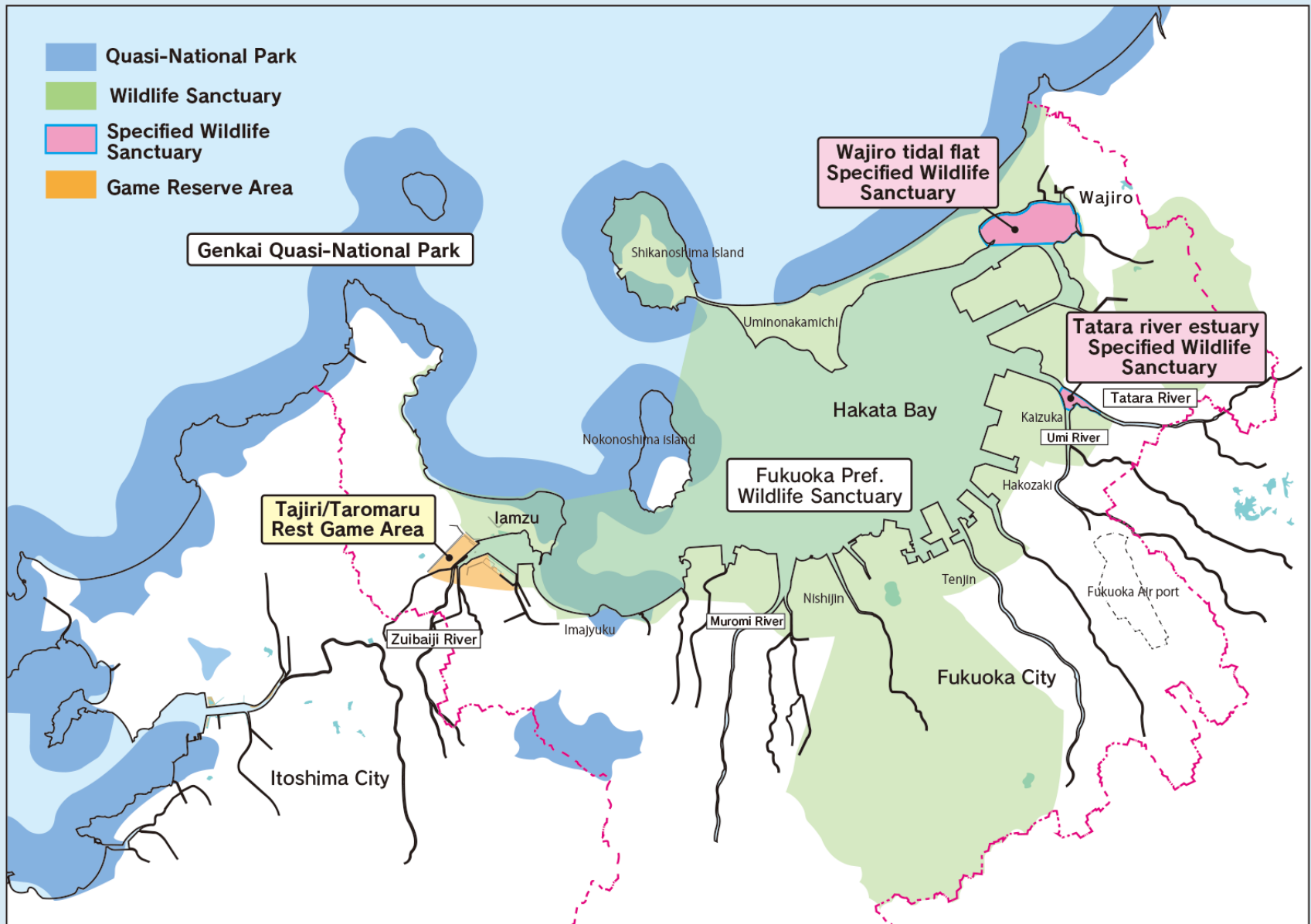
Fig 1.1 Map of the Hakata Bay<sup>5</sup>.

A : Flyway map of BFS

B: Hakata Bay and Boundary of Fukuoka City

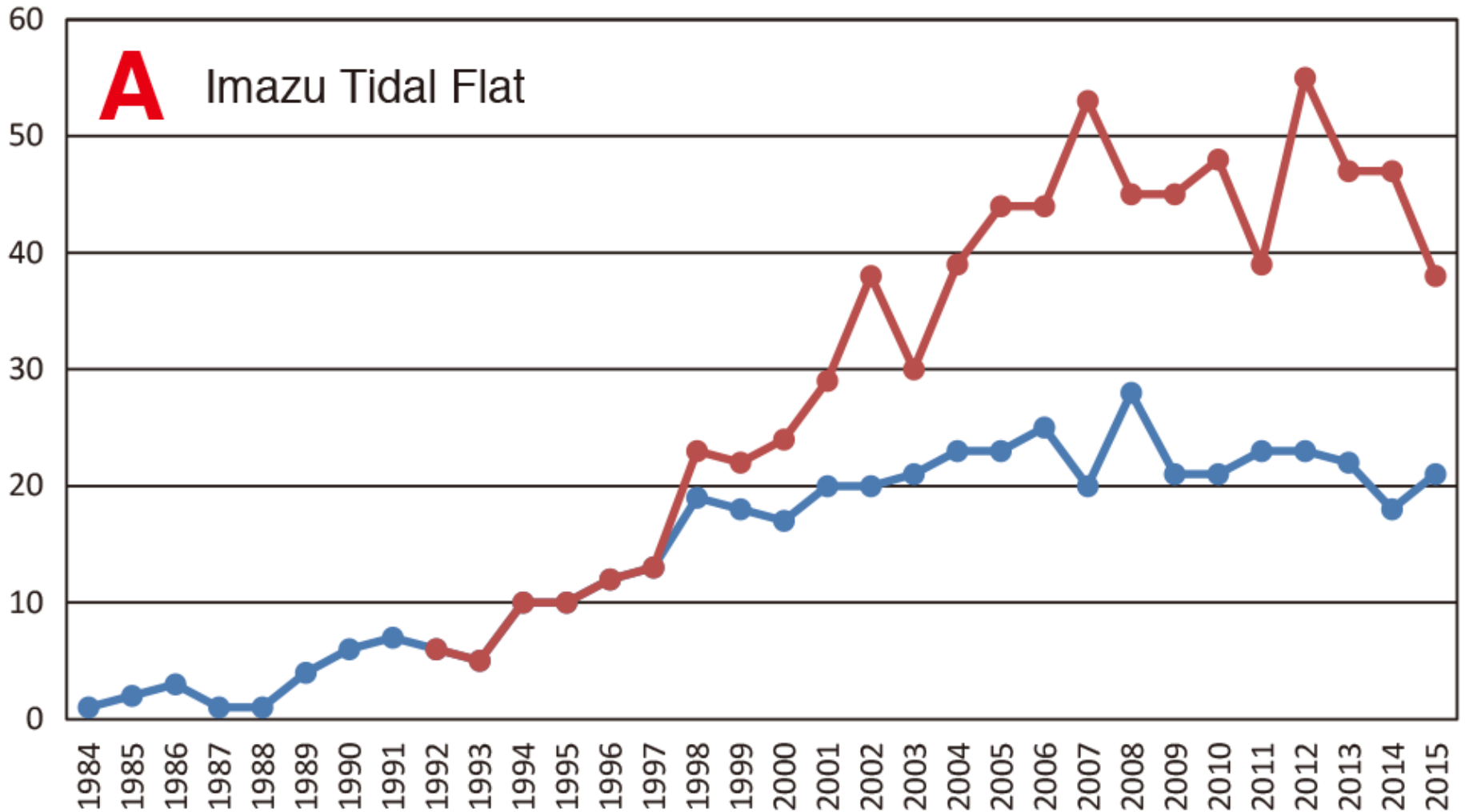
(Map was modified from the electric map by the Geospatial Information Authority of Japan )

# PROTECTED AREAS IN HAKATA BAY

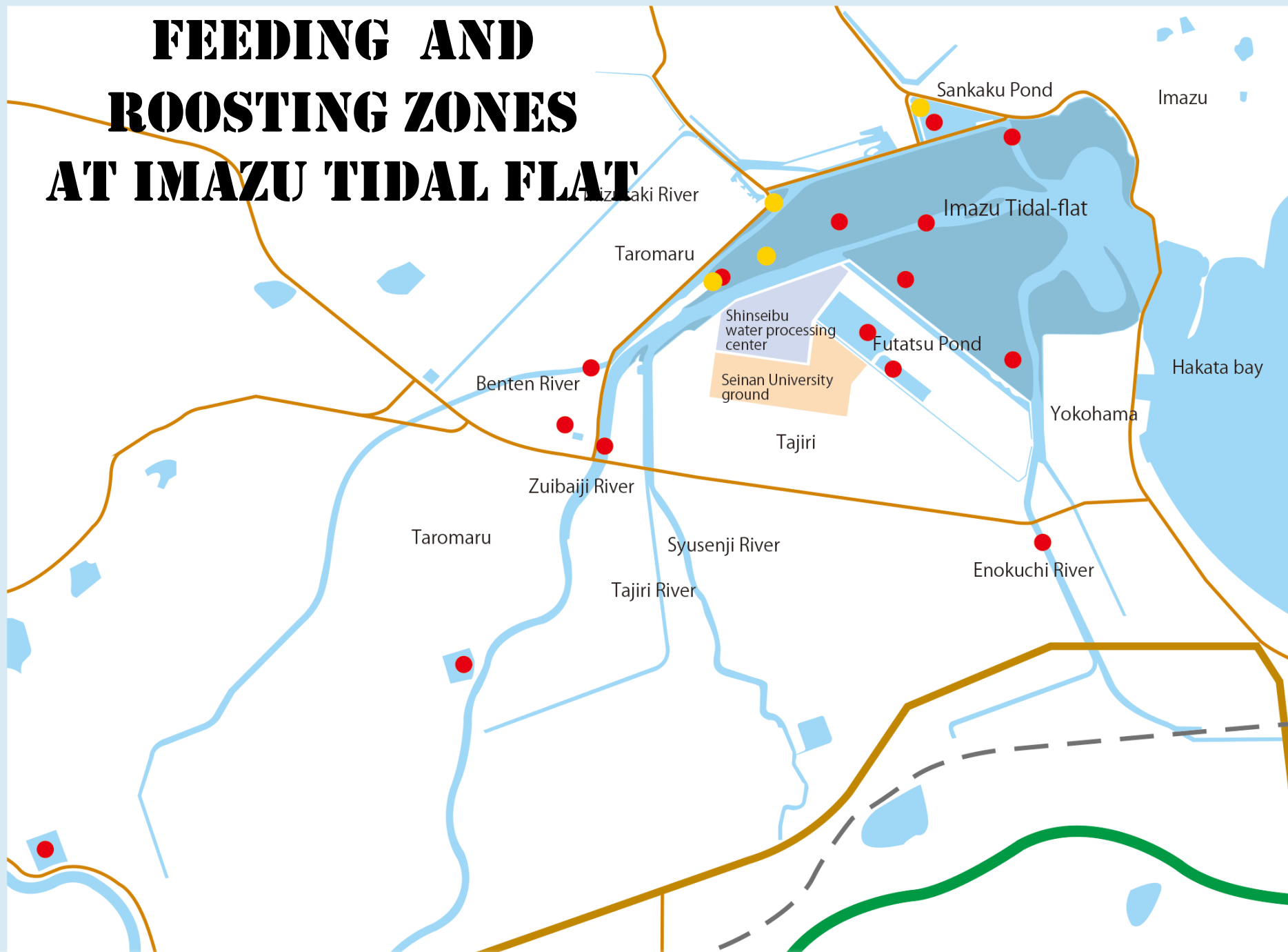


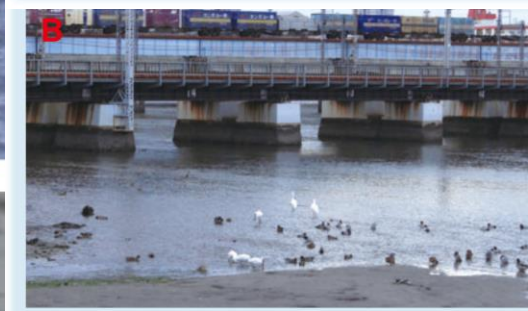
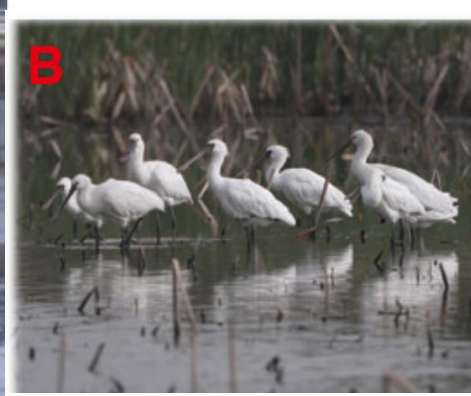


# POPULATION HISTORY FOR THE BLACK-FACED SPOONBILL AT IMAZU TIDAL FLAT IN HAKATA BAY



# FEEDING AND ROOSTING ZONES AT IMAZU TIDAL FLAT





**FEEDING  
BEHAVIOR**

# ROOSTING BEHAVIOR





# RECENTLY FORMED ROOSTING SITES AROUND THE HAKATA BAY



# Topics No.1 : Origin of the scientific name for BFS

Temminck & Schlegel, 1849



Copyright 2000, Kyoto University Library

LA PETITE SPATULE DU JAPON  
PLATALEA MINOR



Copyright 2000, Kyoto University Library

LA GRANDE SPATULE DU JAPON  
PLATALEA MAJOR

シーボルト 日本鳥類図譜

監修解説 山階 芳麿

SIEBOLD, Ph.F.

FAUNA JAPONICA  
AVES



クロツラヘラサギは本書によって記載、命名され、その学名が現在も残っている。本種は以前には中国東北区・東部、朝鮮半島南西の小島などで繁殖していたらしいが、現在、この種の繁殖が确实なのは中国の福建省の沿岸部だけのようである。この種は亜種には分化していない。日本には、年によって1羽か数羽が渡来するだけである。

In the book "Fauna Japonica, Aves" by Siebold Ph F.,  
"BFS was decribed and namined by this book."



絶滅危惧種のクロツラヘラサギ。「ファウナ・ヤポニカ」鳥類編で新種として発表された。標本はビュルガーが入手した1点だけである。

*Platalea leucorodia*

## 水谷豊文『水谷禽譜』

### 余曾三『百花鳥図』

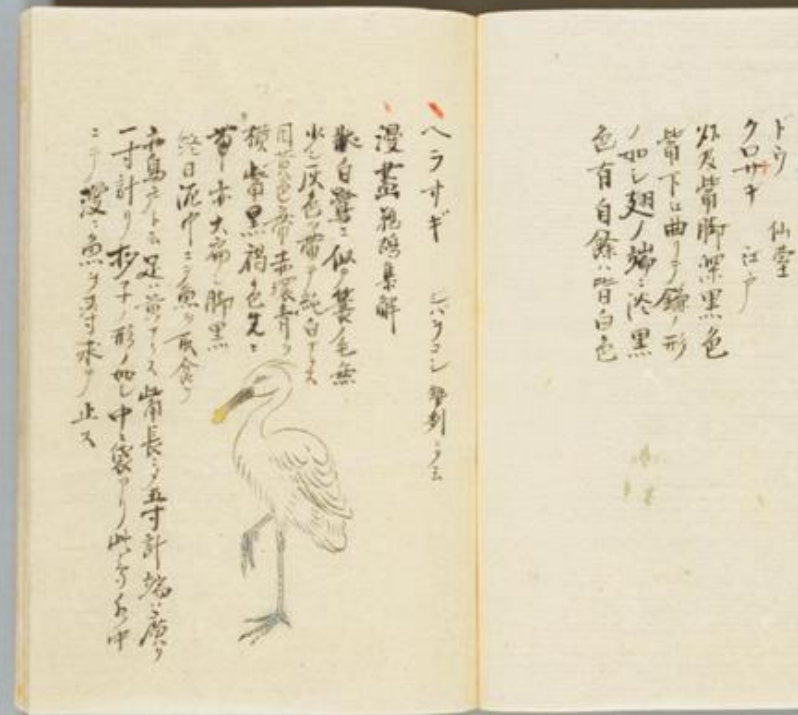
元文2年(1737)に伝来した。  
ヘラサギの記述なし

文政9年(1826)宮駅で、江戸に向かうシーボルトに会い植物標本を見せる、シーボルトより高い評価を受け交流が始まる。約1万種の植物について記載した『本草綱目紀聞』60冊のほかに、鳥類503種の美麗なる彩色図譜『水谷禽譜』8冊



百花鳥図 2帖 寄別10-1 02-054裏

国立国会図書館



水谷禽譜 8冊 寄別11-44 06-035

国立国会図書館

# Topics No.2 : Alive Capture for BFS

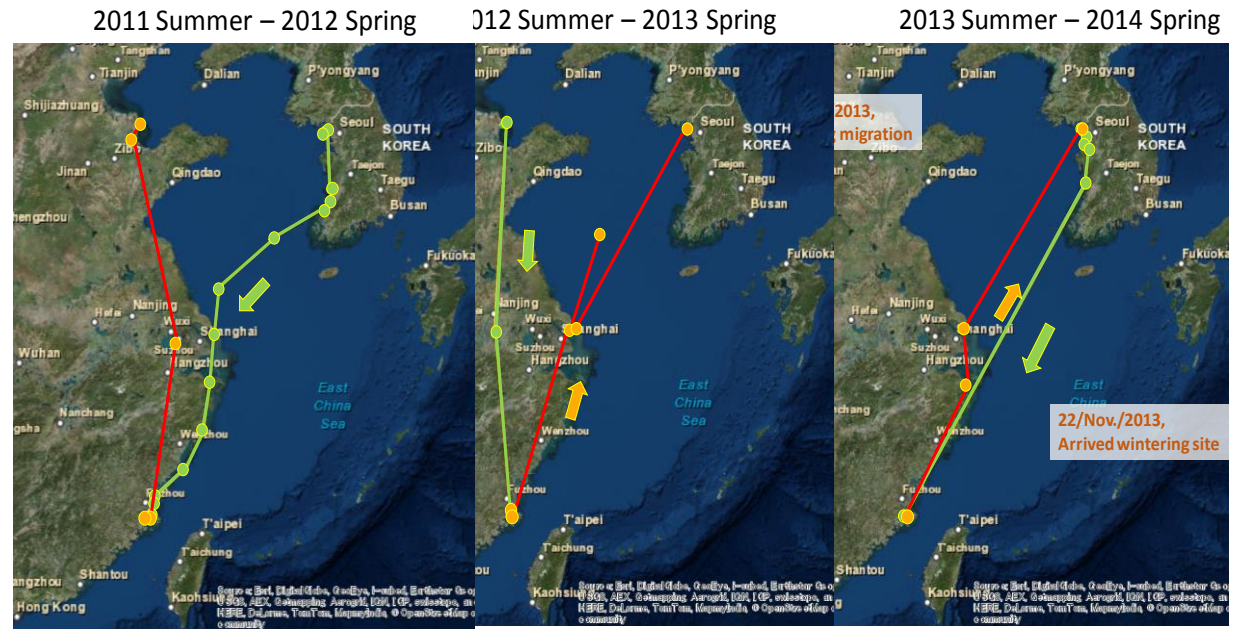


日本工機株式会社  
Nippon koki Co.,Ltd.

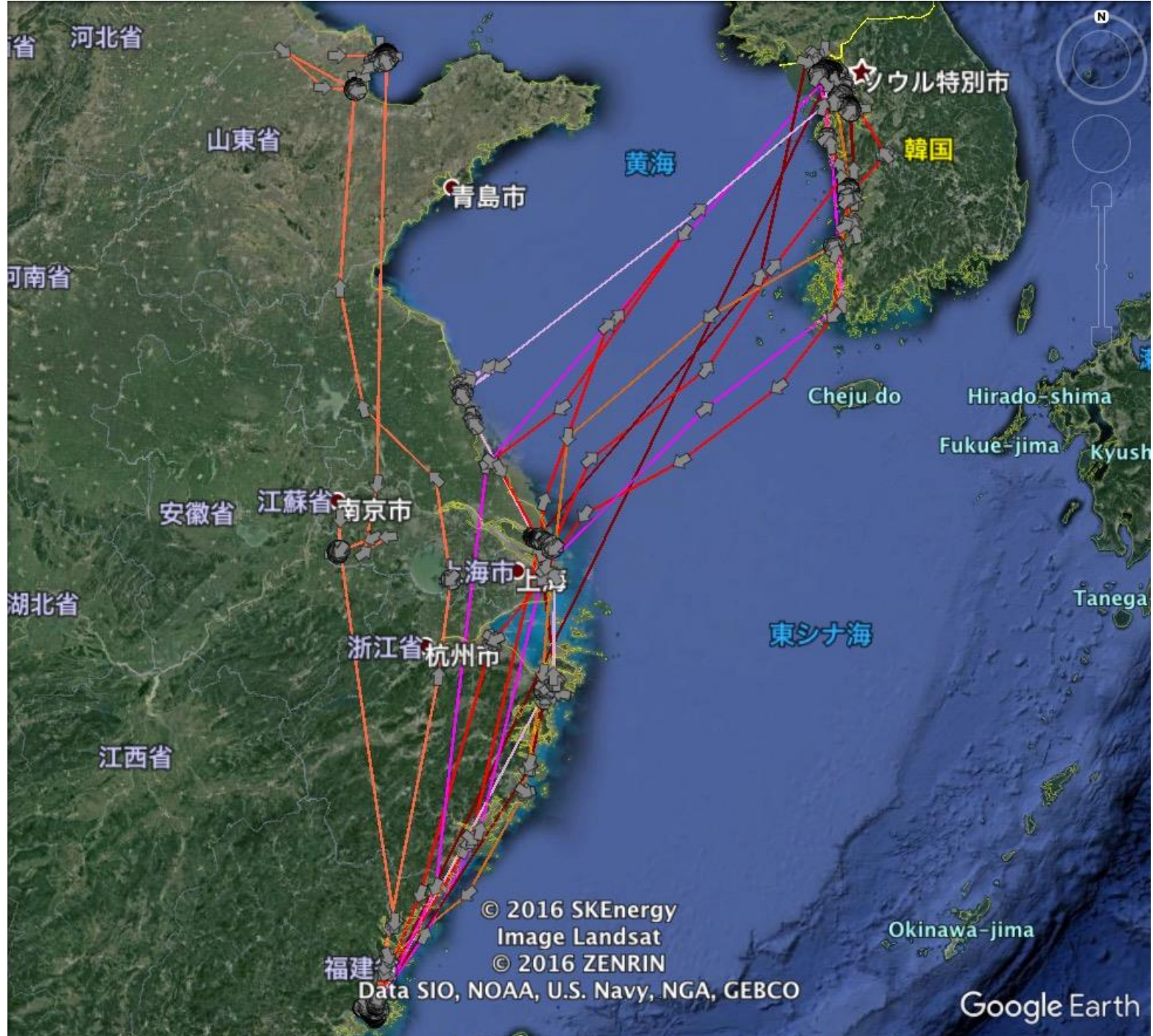


# Topics 3 : Solar-GPS satellite tracking

E48 migrate to Taiwan by way of southern Korea peninsula. Spend a breeding season at coast of Laizhou bay in China and returned to breeding site in 2014.



E48 sends signals again in 2015 after she returned to Seoman-do on May 26. This GPS had a record of 5 years and 5 months.



© 2016 SKEnergy  
Image Landsat  
© 2016 ZENRIN  
Data SIO, NOAA, U.S. Navy, NGA, GEBCO

Google Earth

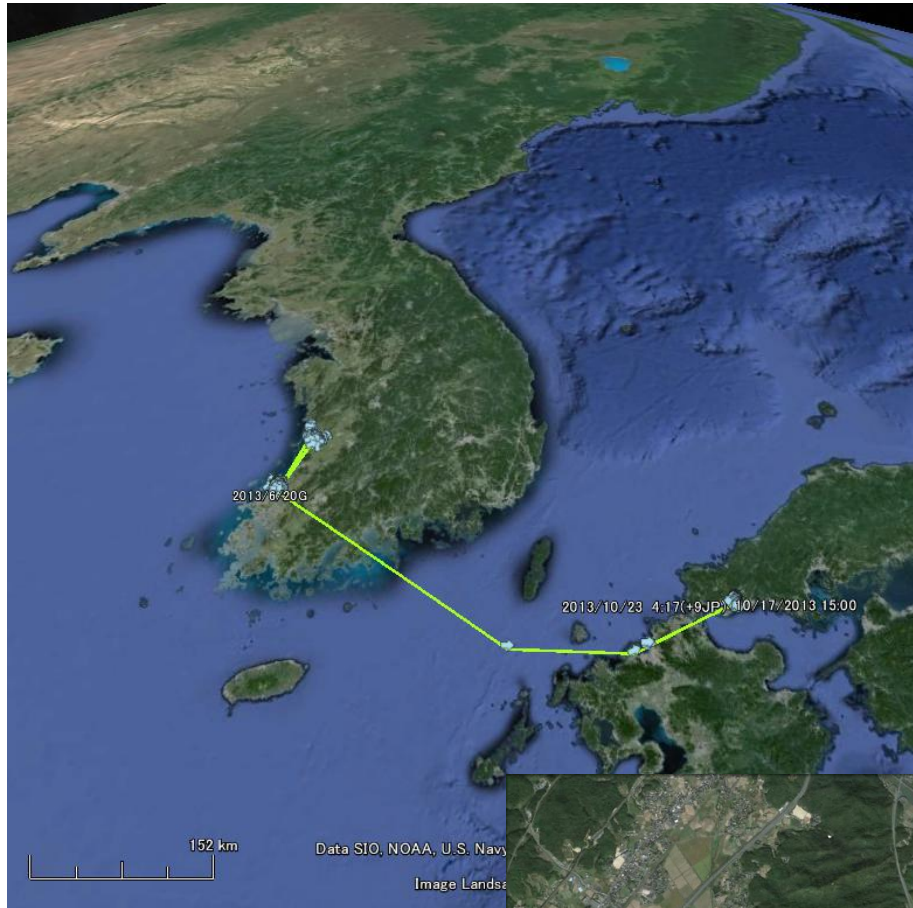




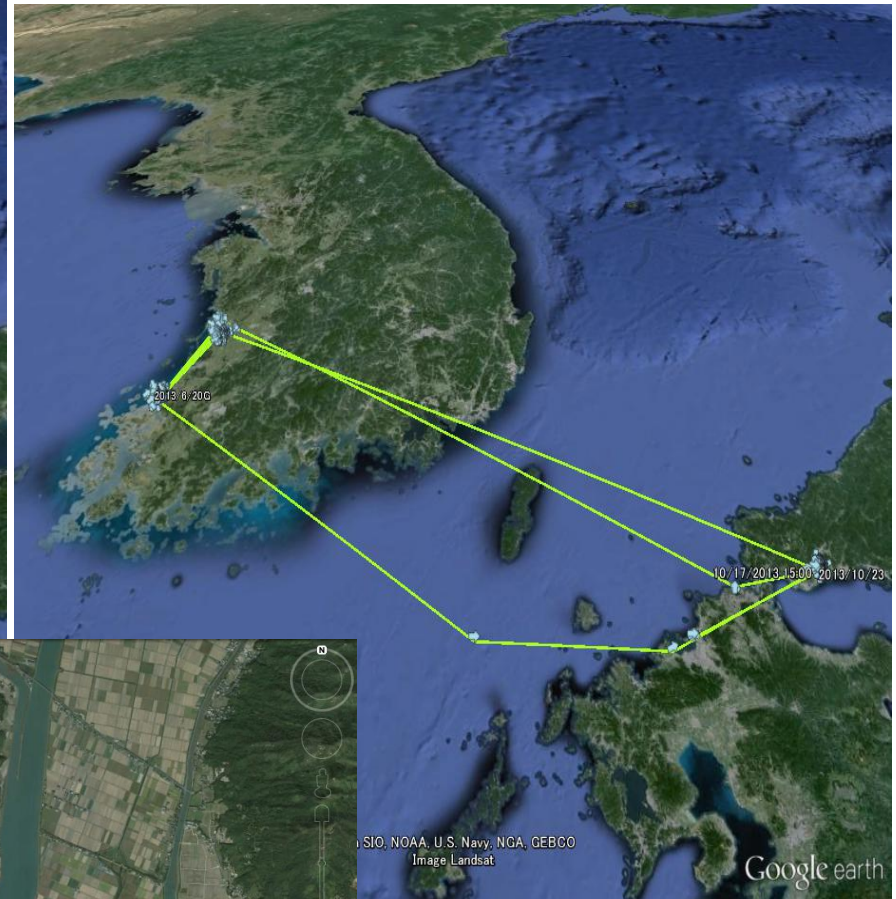
67939simple(E48).kml

S08 2013-10-01 → Oct. 23

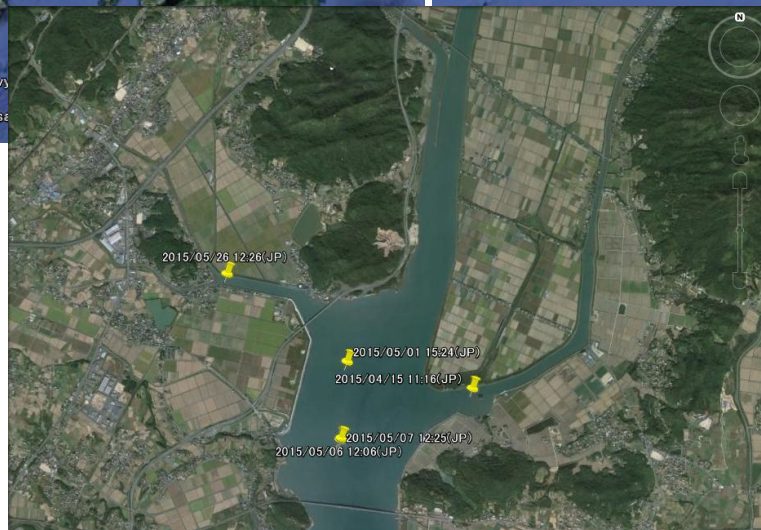
# Solar-GPS satellite tracking



2014 in Semangum → Yamaguchi

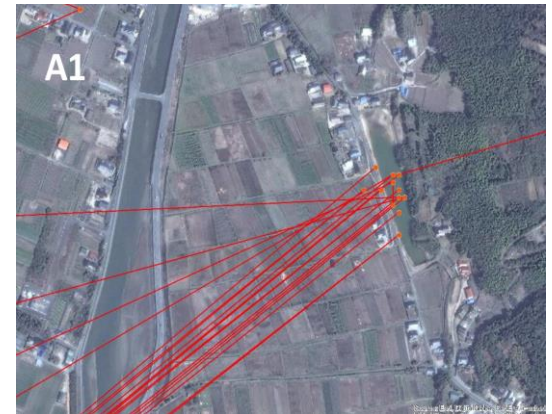
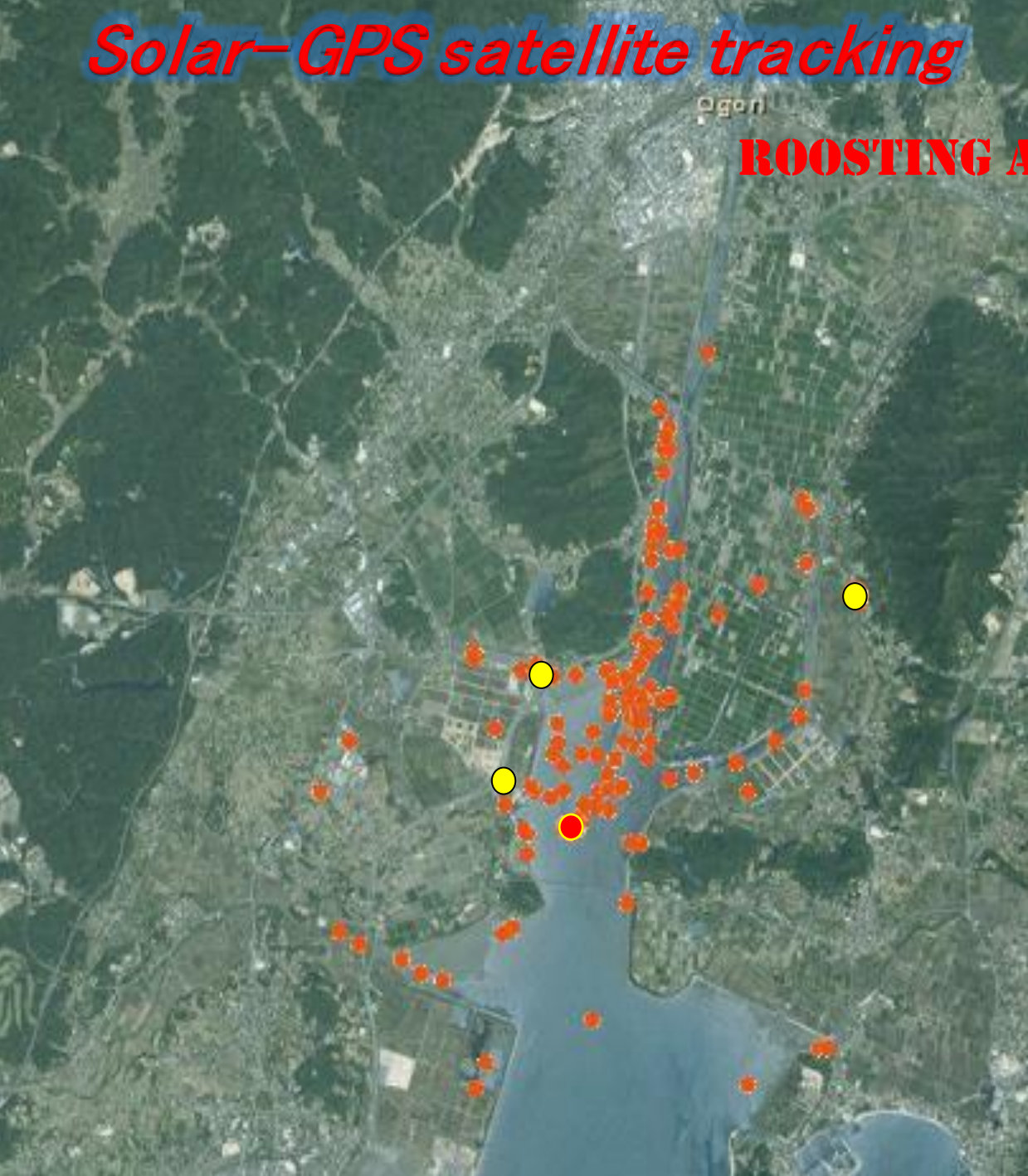


2015 May  
Yamaguchi



# *Solar-GPS satellite tracking*

## **ROOSTING AND RESTING SITES**



# Solar-GPS satellite tracking



## FEEDING AT MUD FLATS

# FEEDING ALONG WATER ROOTS



# FEEDING ALONG WATER ROOTS



# FEEDING ALONG WATER ROOTS



Source: Esri, DigitalGlobe, GeoEye, Earthstar Geographics, CNES/Airbus DS, USDA, USGS, AeroX, Getmapping, Aerogrid, IGN, IGP, swisstopo, and the GIS User Community, Esri, HERE, DeLorme, TomTom, Mapbox, © OpenStreetMap contributors, and the GIS User Community

# INLAND USE FOR FEEDING

