



# Public Transport in Leipzig – a tram city

**23.11.2021**

**Dipl.-Ing. Torben Heinemann**

**City of Leipzig**

**Office for Traffic Planning and Road Construction**

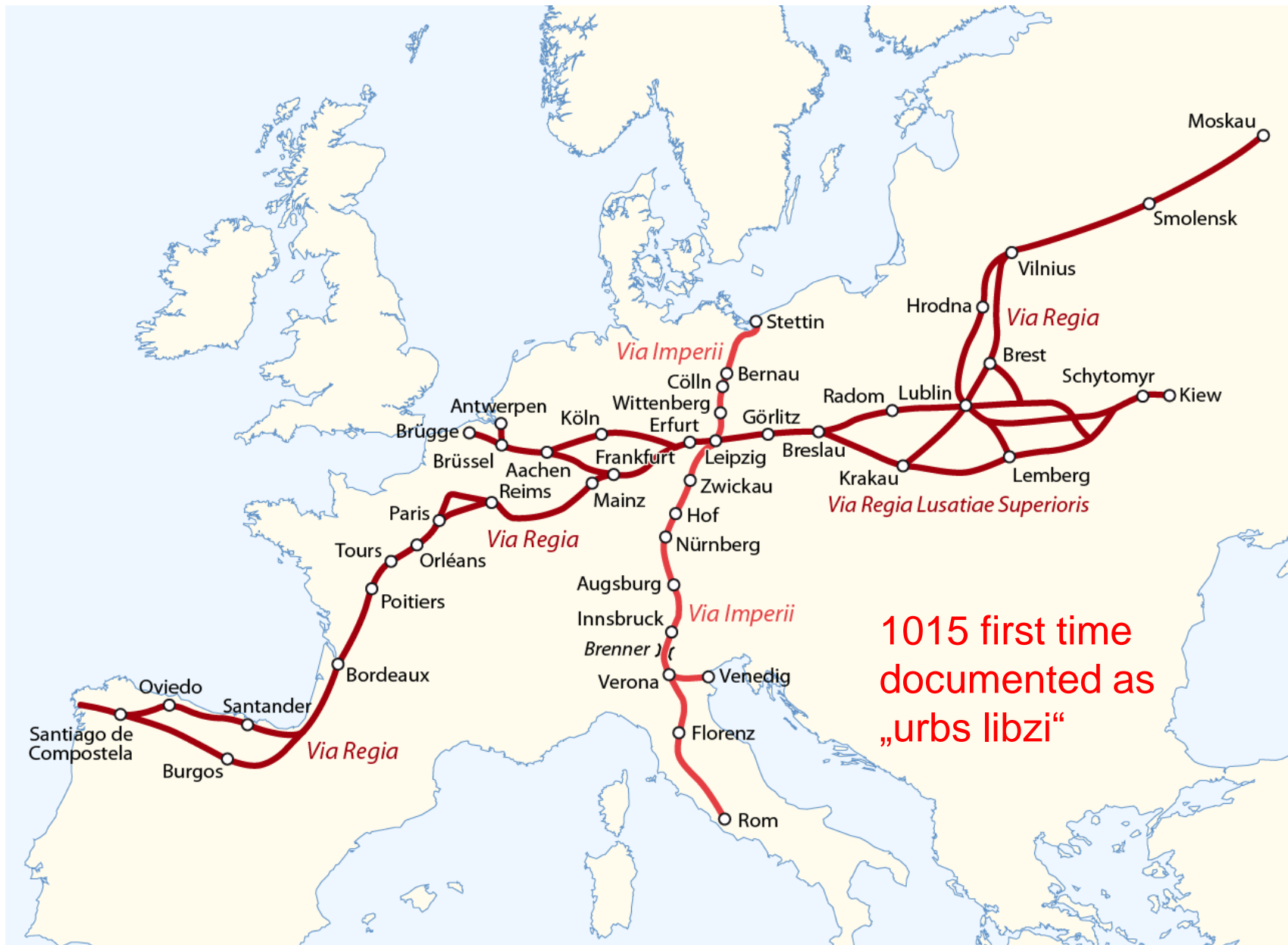


# Leipzig – introduction





# Via Regia + Via Imperii = Leipzig



1015 first time  
documented as  
„urbs libzi“

# Leipzig – city of culture, trade and traffic



# Leipzig – numbers and facts



<b>inhabitants</b>	<b>ca. 605.000</b>
<b>area</b>	<b>29.760 ha</b>
<b>road network</b>	<b>1.785 km</b>
<b>tram network</b>	<b>148 km</b>
<b>tram lines</b>	<b>13</b>
<b>bicycle network</b>	<b>525 km</b>

# Region Leipzig-Halle



- Leipzig-Halle: region with 1.8 mio. inhabitants
- very good transport infrastructure
- motorways in all directions
- rail service to Berlin 1 hour

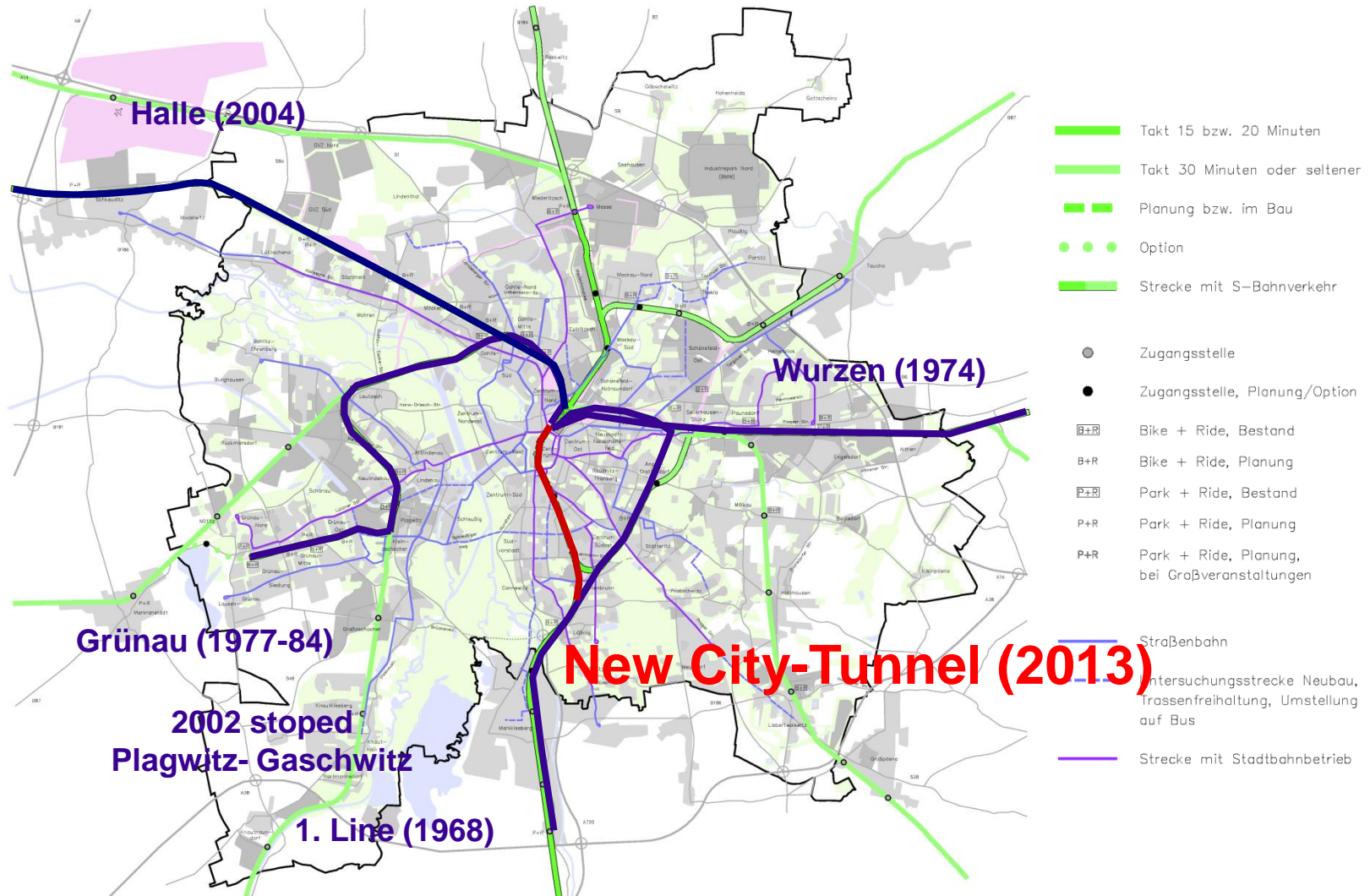


# Leipziger Hauptbahnhof – main train station



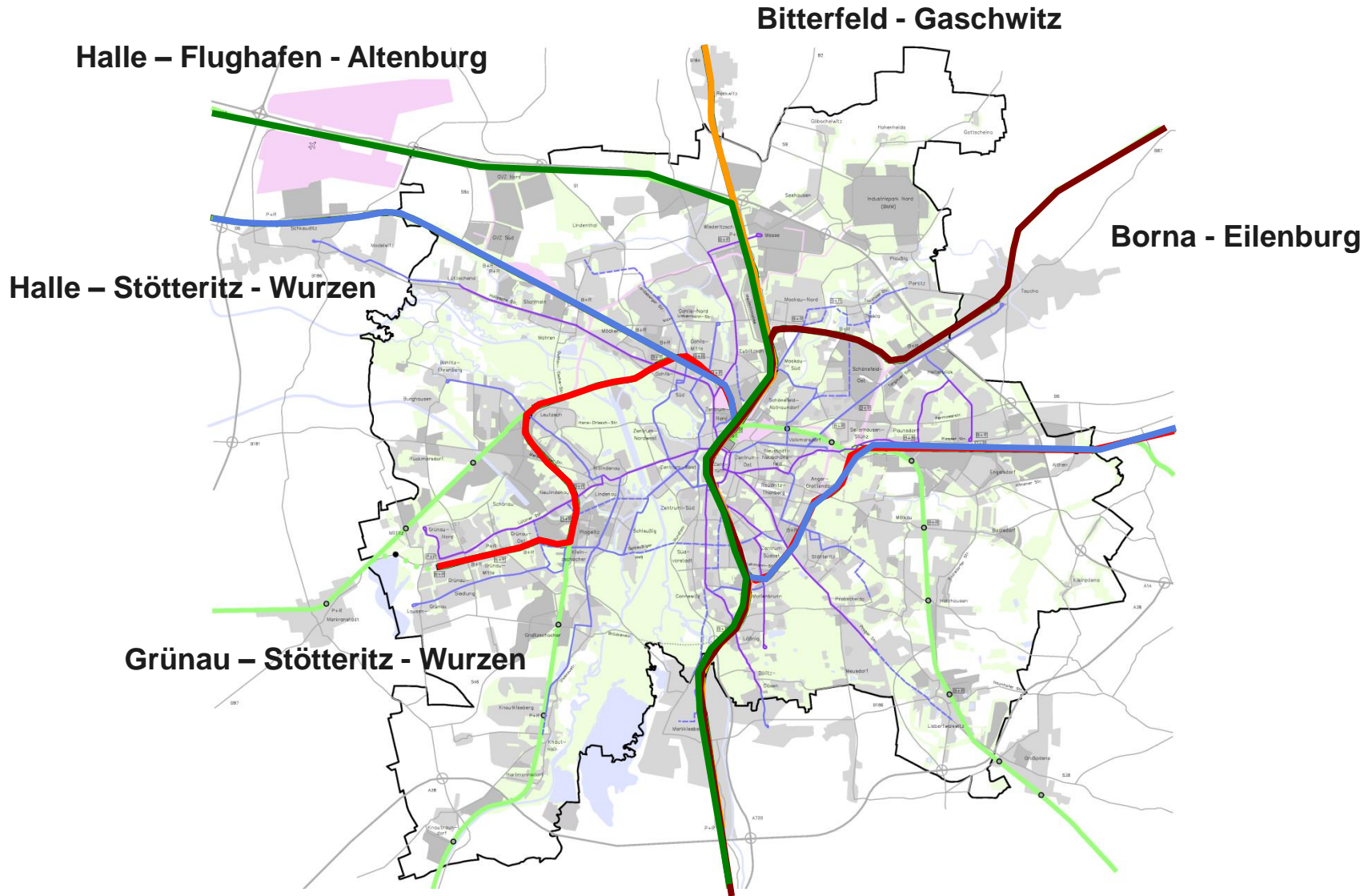
Source: Freistaat Sachsen

# history - local and regional rail service

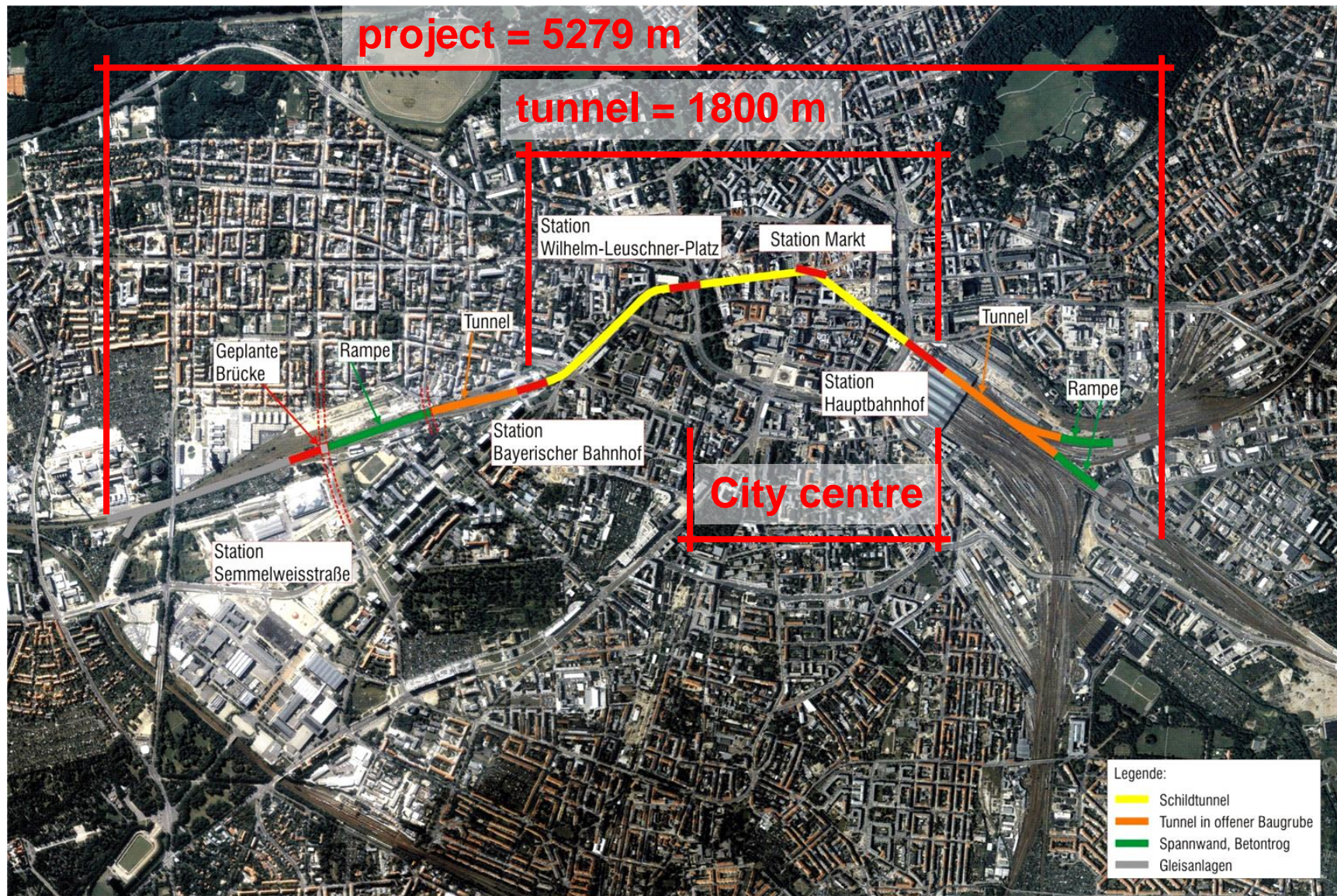




# The new local and regional rail service



# City-Tunnel Leipzig

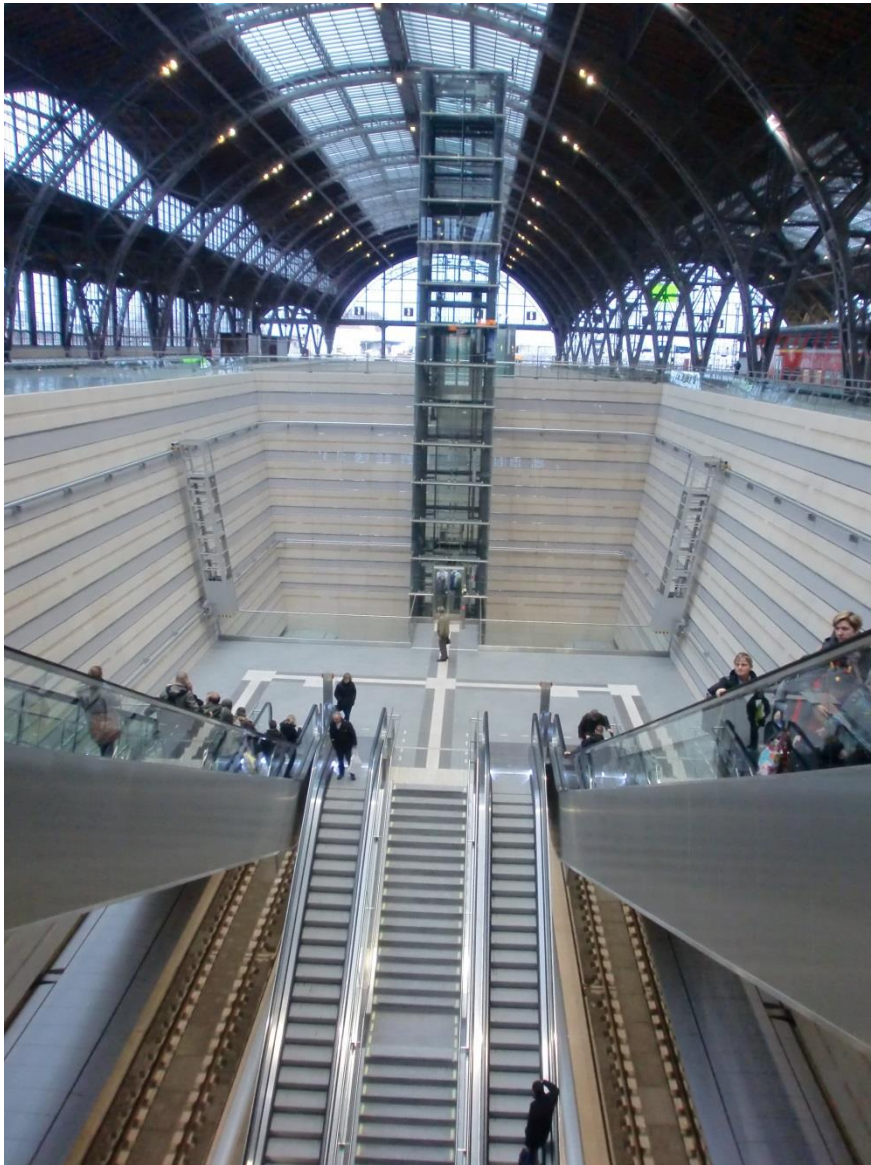


# Main station (Hauptbahnhof) – HPP Architekten



Aldinger & Wolf  
VSBG Leipzig

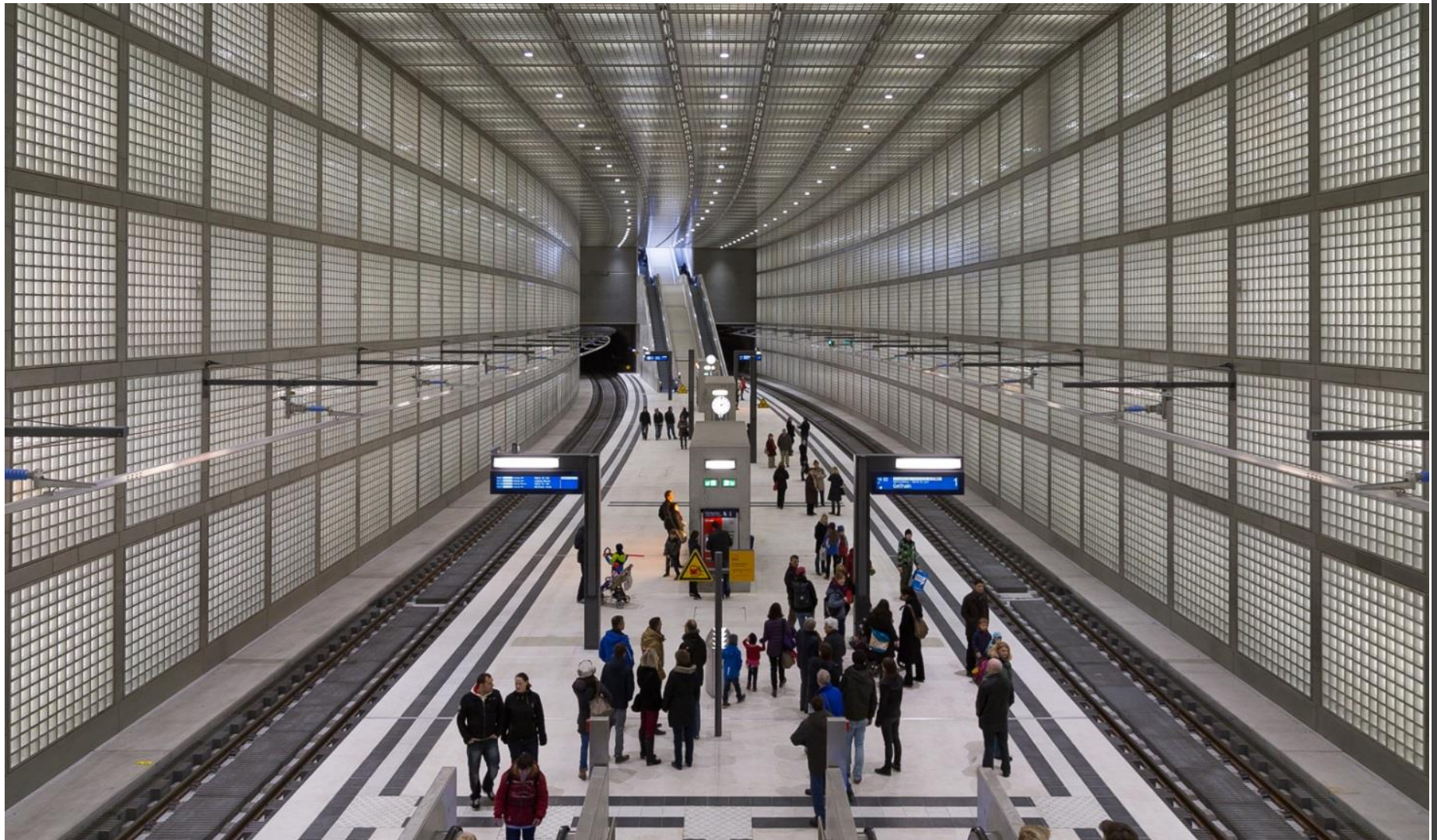
# Main station



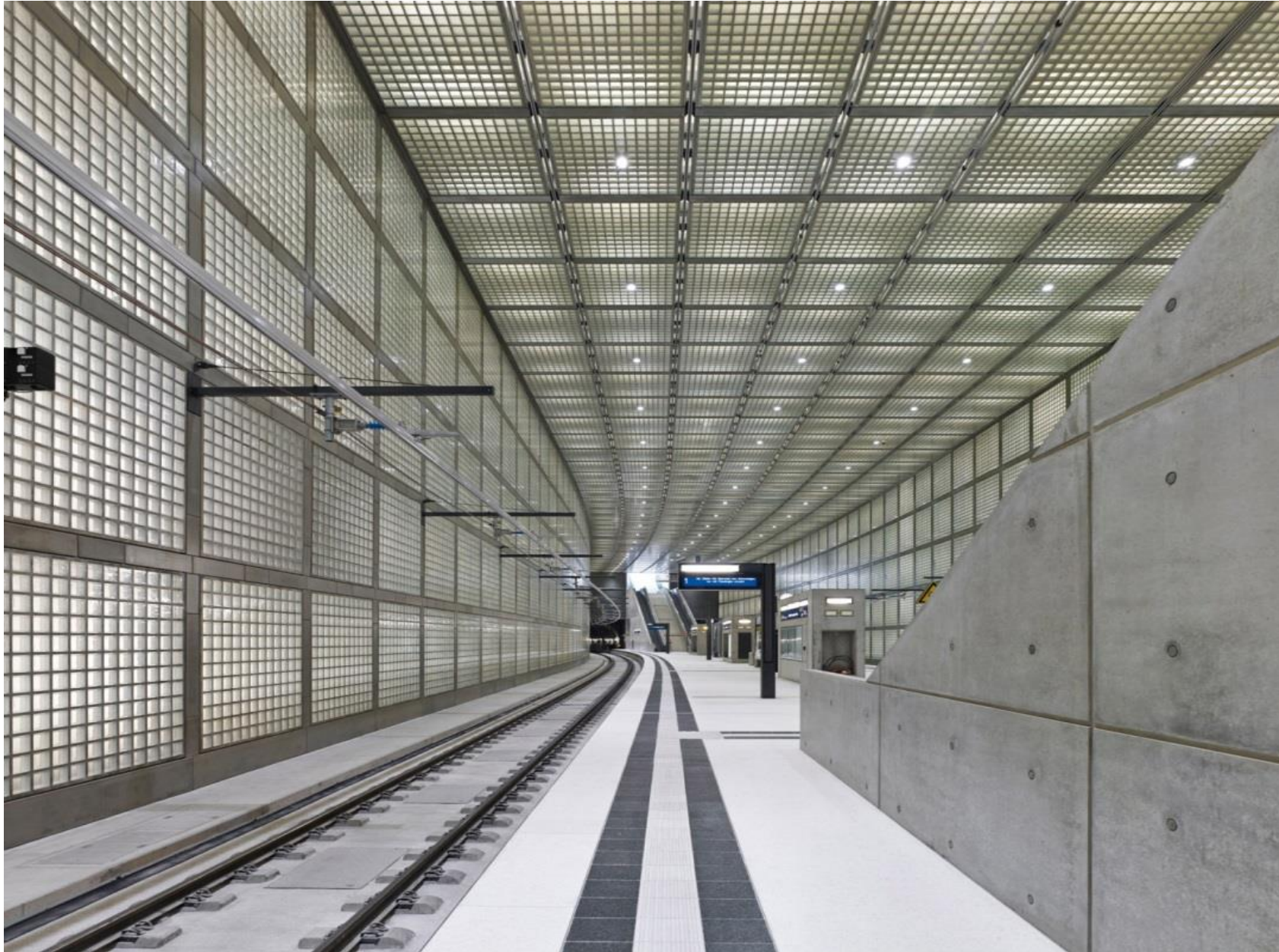
# Market station



# Wilhelm-Leuschner-Platz



# Wilhelm-Leuschner-Platz

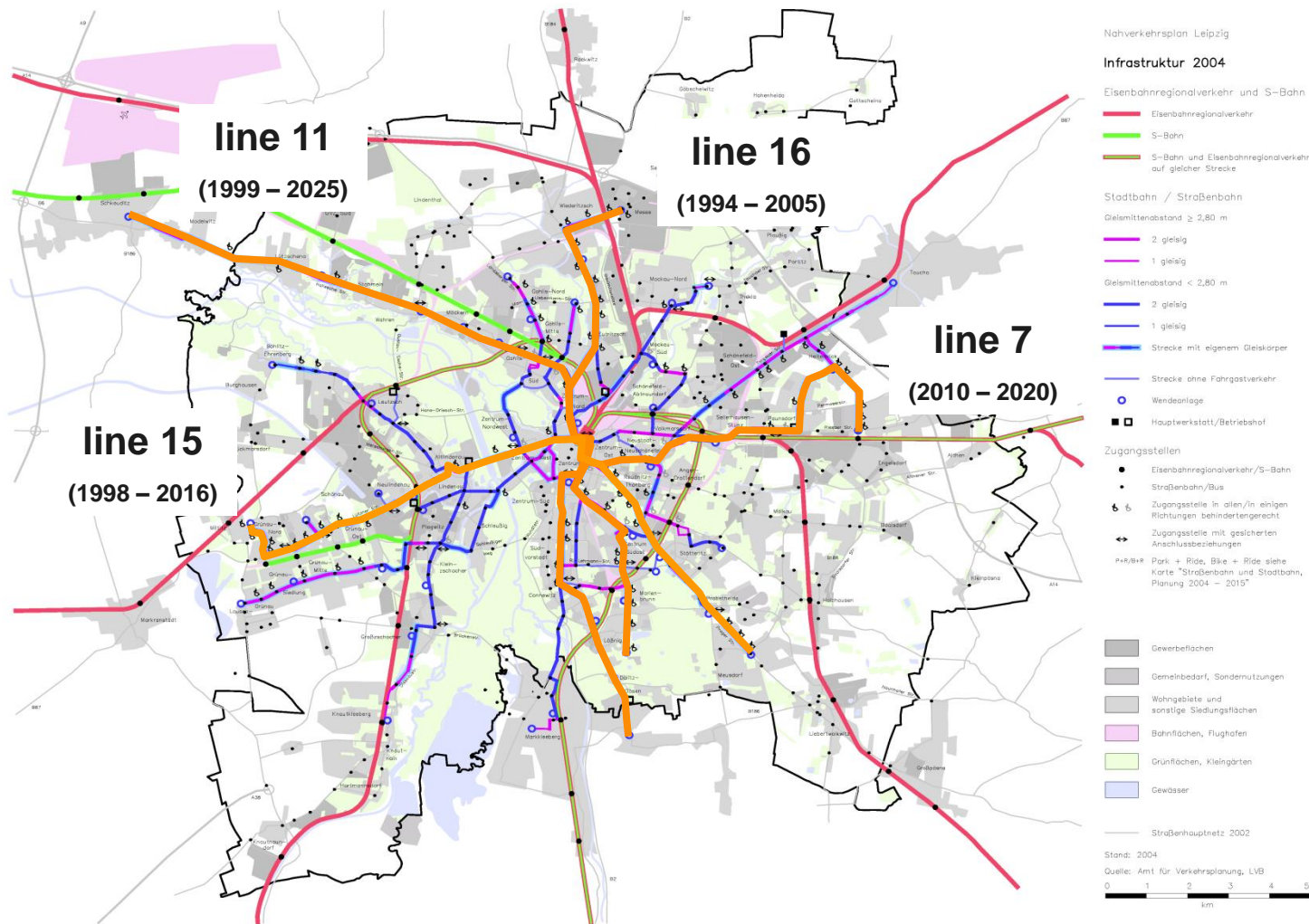


# Tram line 15





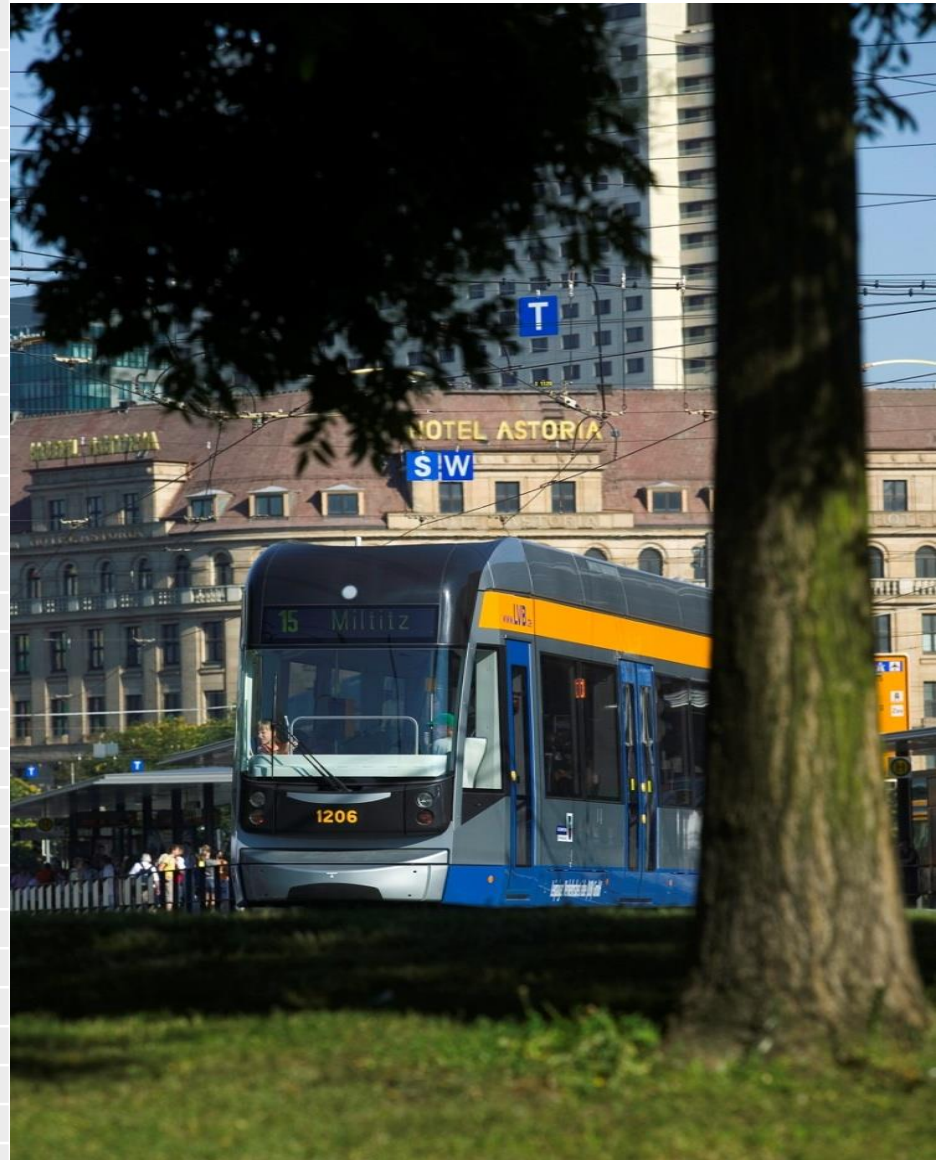
# The tram improvement program



# Leipzig – one of the oldest tram networks in the world



Top	City	Year	km
1	New Orleans	13.01.1835	
2	Boston	26.03.1856	40,6
3	Ciudad de Mexico	12.12.1857	
4	Rio de Janeiro	30.01.1859	
5	San Francisco	04.07.1860	115
6	Toronto	11.09.1861	75
7	Geneve	19.06.1862	36
8	Alexandria	08.01.1863	32
9	Den Haag	03.06.1864	105
10	Sankt Petersburg	08.09.1863	240
11	Berlin	22.06.1865	189,4
12	Vienna	04.10.1865	172
13	Budapest	30.07.1866	155
14	Warszawa	11.12.1866	124
15	Stuttgart	28.07.1868	122
16	Bruxelles	01.05.1869	138
17	Timisoara	08.07.1869	38
18	Brno	17.08.1869	70,2
19	Arad	24.10.1869	48
20	Turino	1872	
21	Porto	15.05.1872	
<b>22</b>	<b>Leipzig</b>	<b>18.05.1872</b>	<b>148</b>
23	Frankfurt/Main	19.05.1872	67,5
24	Moskau	22.06.1872	181
25	Hannover	16.09.1872	123
26	Dresden	26.09.1872	131,4
27	Antwerpen	25.05.1873	72
28	Gdansk	22.06.1873	52
29	Lisboa	17.11.1873	

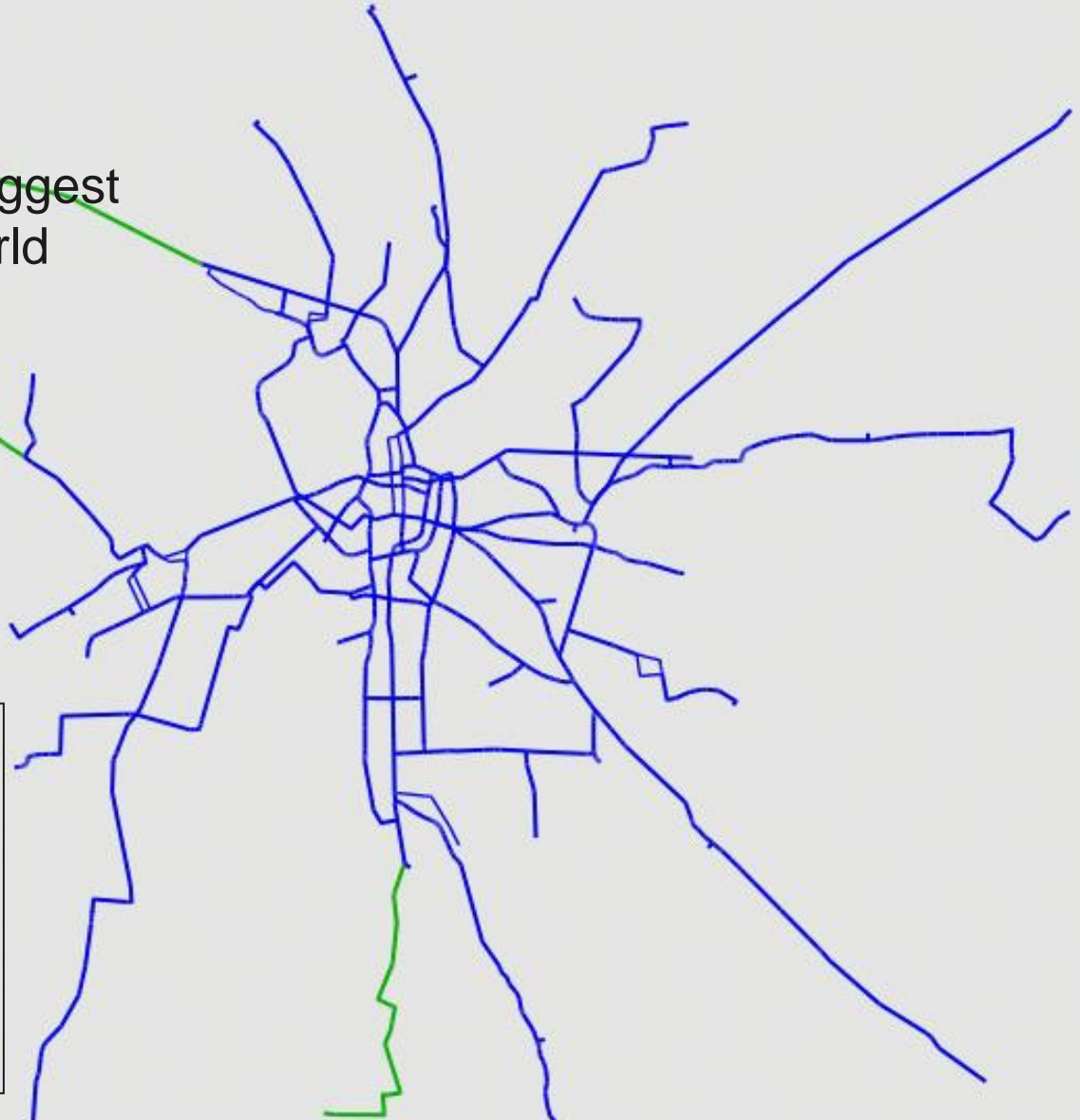


# Tram network in Leipzig



One of the oldest and biggest tram networks in the world

- 3. Köln
- 4. Berlin
- 10. Leipzig**
- 14. Dresden
- 16. Bonn





# Leipzig – Tram network in the TOP 10 of the world

Top	City	Year	km
1	Melbourne	11.11.1885	245
2	Sankt Petersburg	08.09.1863	240
3	Sofia	01.12.1898	195,3
4	Collogne	18.05.1877	194
5	Berlin	22.06.1865	189,4
6	Lodz	24.12.1898	182
7	Moskau	22.06.1872	181
8	Kattowice	27.05.1894	171
9	Budapest	30.07.1866	155
<b>10</b>	<b>Leipzig</b>	<b>18.05.1872</b>	<b>148</b>
11	Bucuresti	09.02.1874	143
12	Prag	23.09.1875	141
13	Bruxelles	01.05.1869	138
14	Dresden	26.09.1872	131,4
15	Oslo	06.10.1875	131,4
16	Bonn	15.04.1891	125,4



# Tram stop Goerdelerring



# Tram stop Phillip-Rosenthal-Straße



# Tram stop Coppiplatz



# Tram stop Lindenau bus depot





# Tram stop Main Station



# Tram stop New fairground



# Tram stop New Fairground





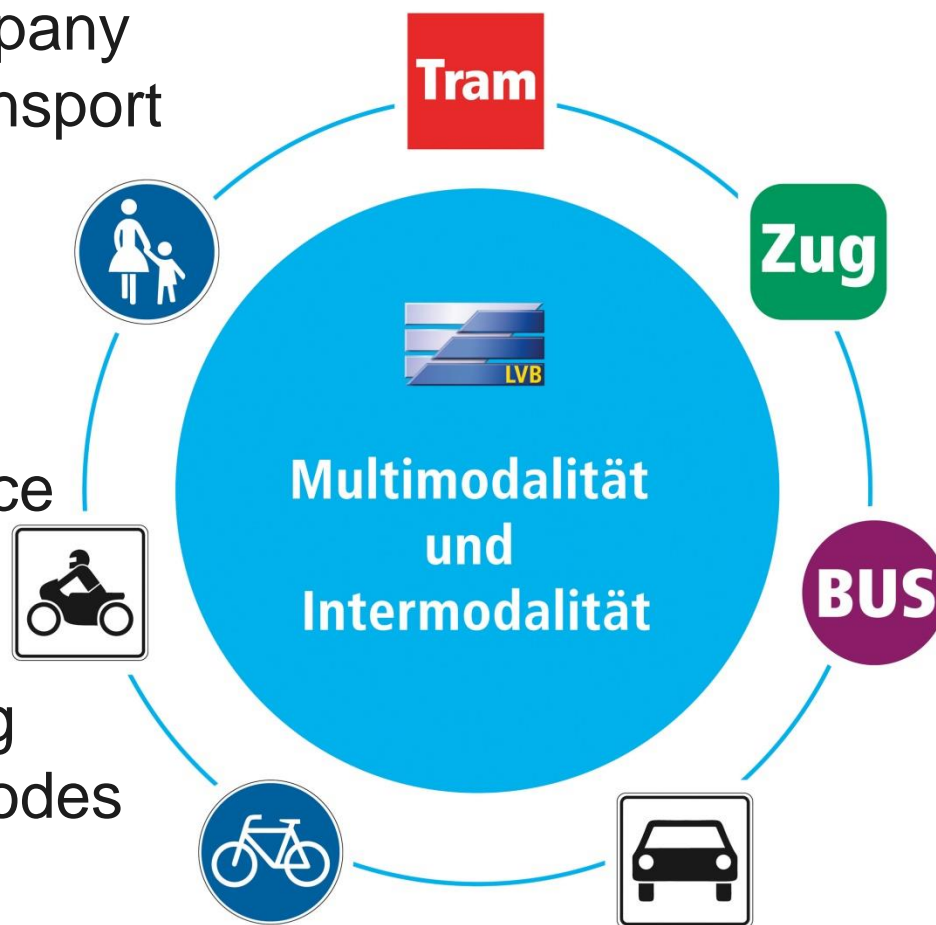
# New Mobility-Stations in Leipzig

The Idea:

The public transport company provides all modes of transport out of one hand.

These are:

- tram, bus, rail-service
- carsharing
- bike sharing
- electric car charging
- information to all modes
- one bill for all



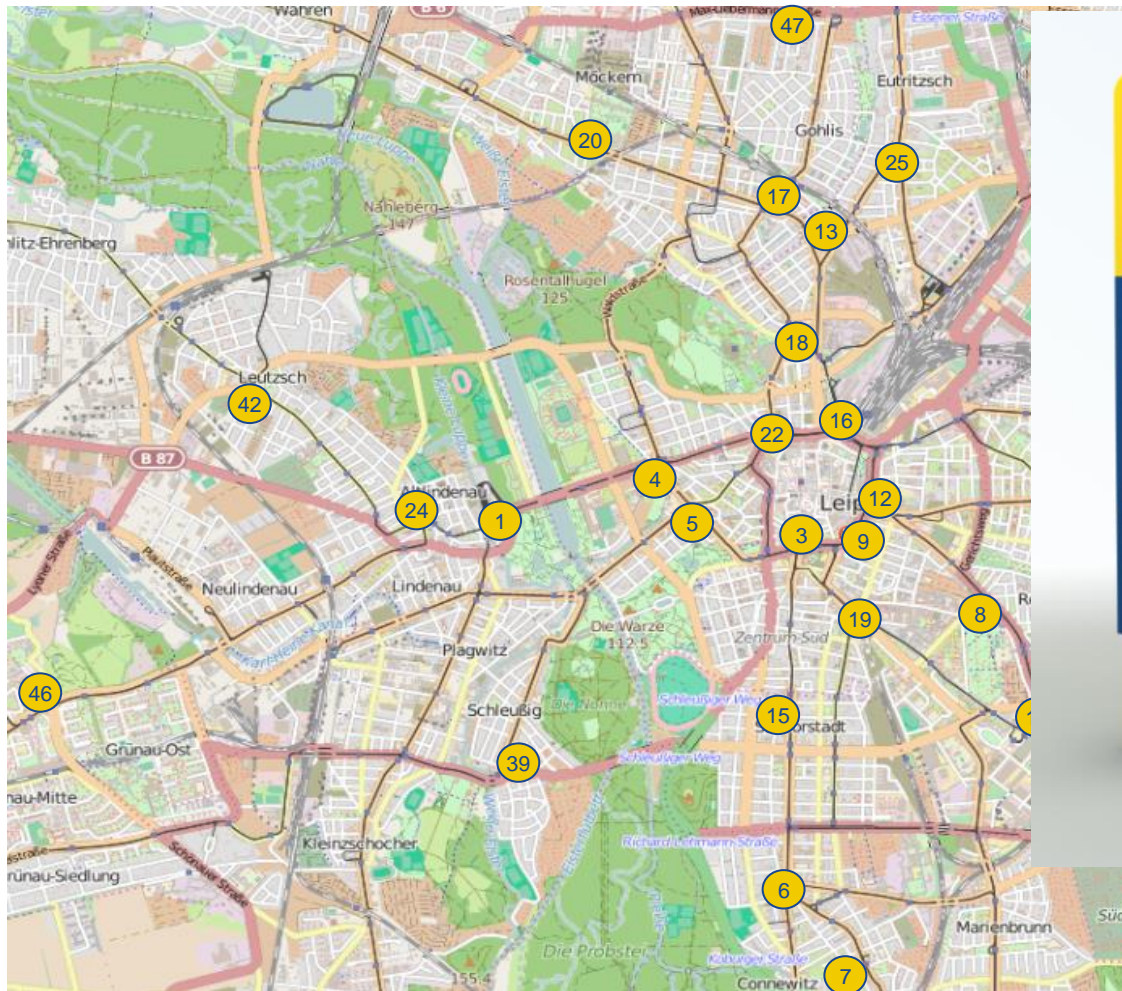
# Intermodality with “Leipzig mobil”

Easy use of different modes of transport for one trip



# A network of mobility stations

Easy access to a dense net of mobility station



# Thank you for your attention







# City of Leipzig

Department of City Development and Construction  
Office for Transport Planning and Road Construction  
04092 Leipzig

[www.Leipzig.de/Verkehrsplanung](http://www.Leipzig.de/Verkehrsplanung)

