

An aerial photograph of a wetland area, likely a rice paddy field, showing a grid of narrow canals or ditches. The water in the canals is a dark brown color, and the surrounding land is a lighter brown. Numerous small, dark spots are scattered across the land, which appear to be birds, possibly waterfowl, resting on the ground. The overall scene is a dense, organized landscape of water and land.

Muan wetland Protected Area

MPAs in Muan wetland [muan county]

Status of Muan County

Population : 81,000 Person

Area : 449.54 km²

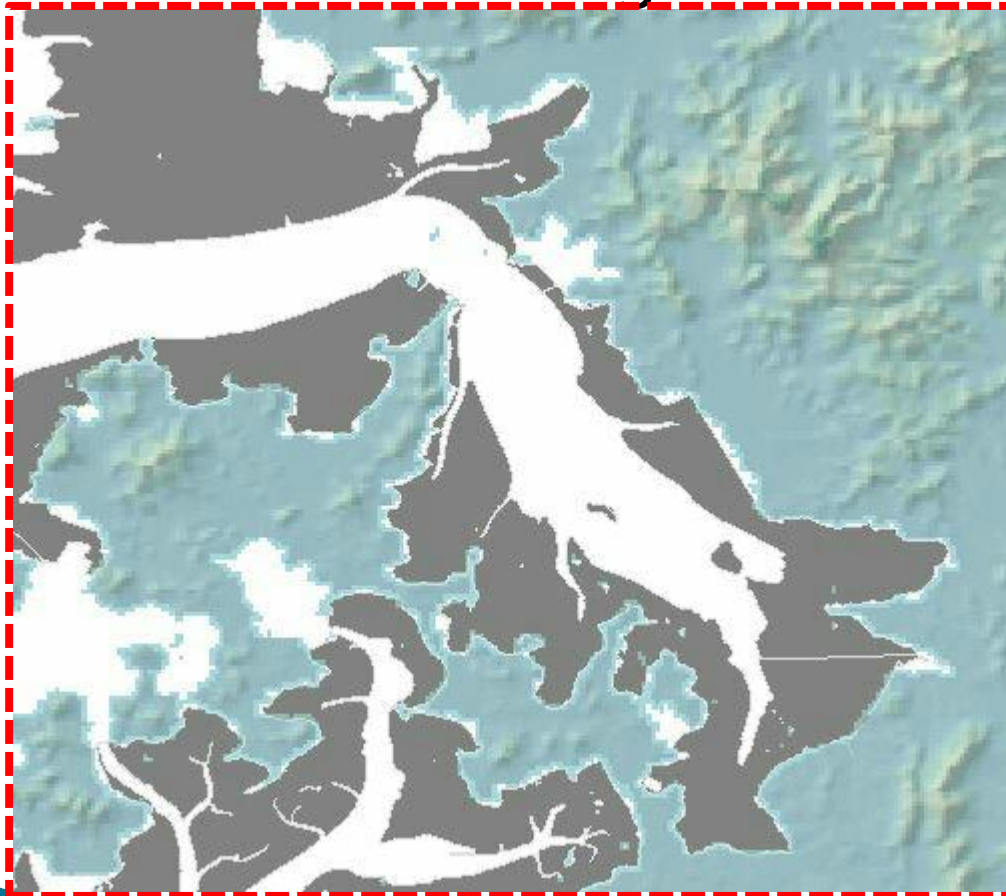
Industrial Structure:
Primary 53%, second 11%, Tertiary 36%

Budgets : 3,951 hundred million

Sea Area : 199.5km², Length of Coastline: 231km

MPAs in Muan wetland [muan county]

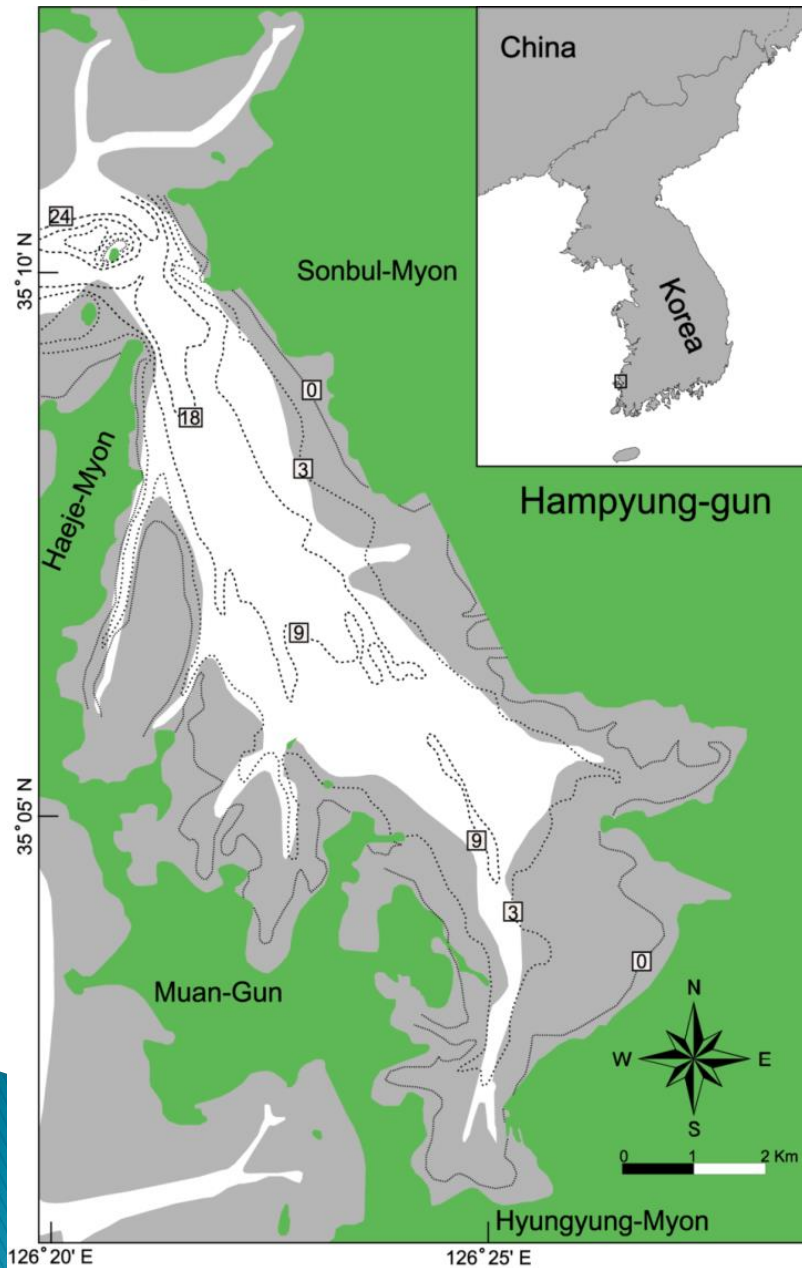
► Overview of assign



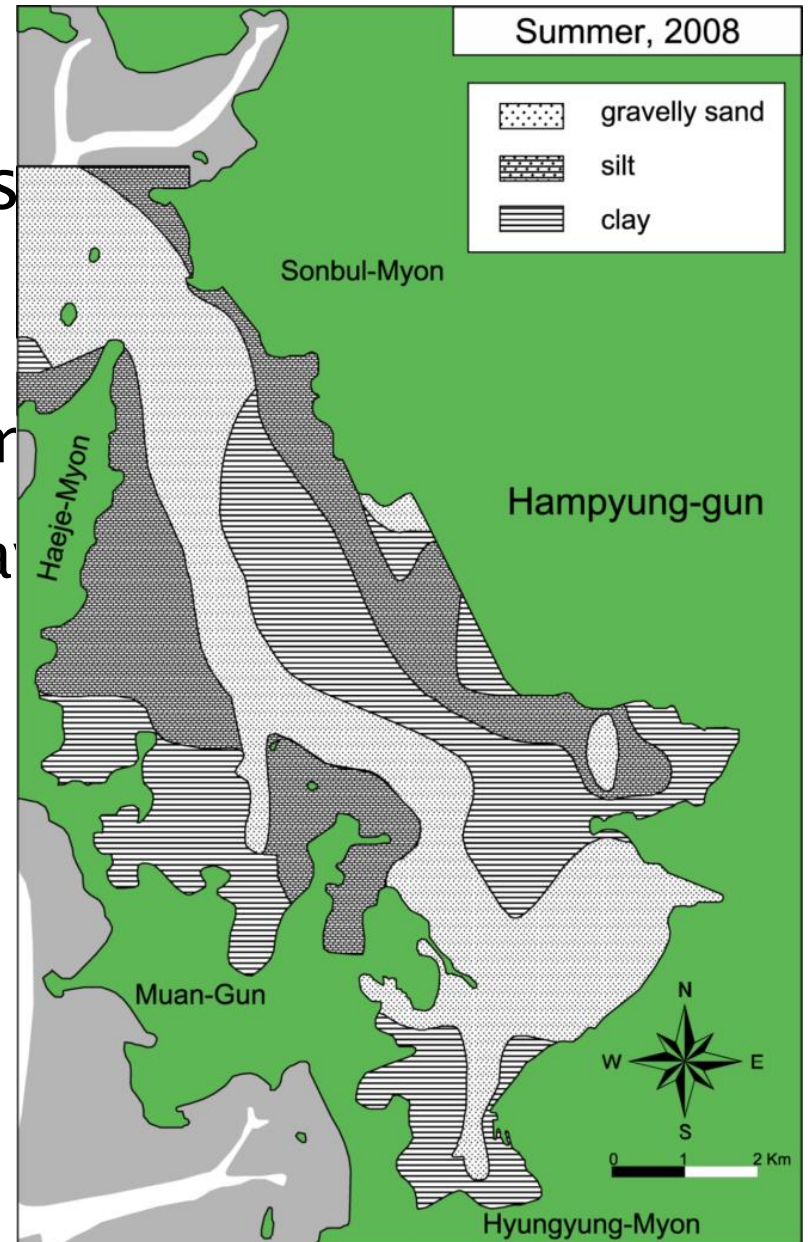
wetland
tion No. 1)
e sub county



Key features of Muan wetland



tics
3m
gra



Key features of the site in Muan county

- ▶ Biodiversity Observation survey
- benthos : octopus, sand crab etc 245 species
- halophyte : reed, japonicus etc 45 species
- Sea bird : Far Eastern Curlew etc 51 species



Key features of the site in Muan county

Culture diversity
(fishing and food)

Fishing culture

Food culture



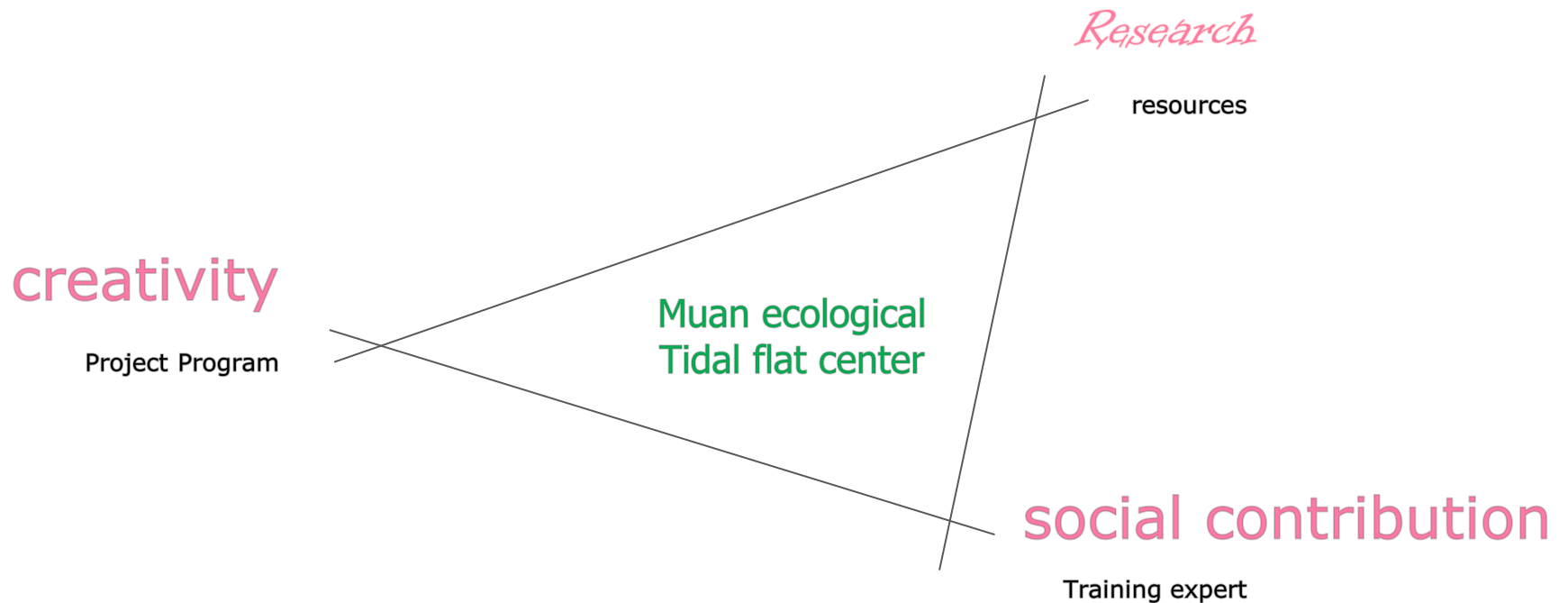
Key features of the site in Muan county

- ▶ Status of Regional center
 - location : haeje–myeon, Muan–county, Rok
 - Main facility : Tidal flat center
 - Amenities : Tidal ecology park, trail, experience study space



Key features of the site in Muan county

- ▶ Network of Regional center



WHAT WE DO



Thank You !