

Experiences in MPA Management In Nanji Islands Biosphere Reserve

SHI Benze & CAI Houcai

June 2016



Content

1. Introduction to Nanji Islands BR
2. Challenges in Nanji Islands
3. Experiences of MPA management

1 Introduction to Nanji Islands



Figure 1

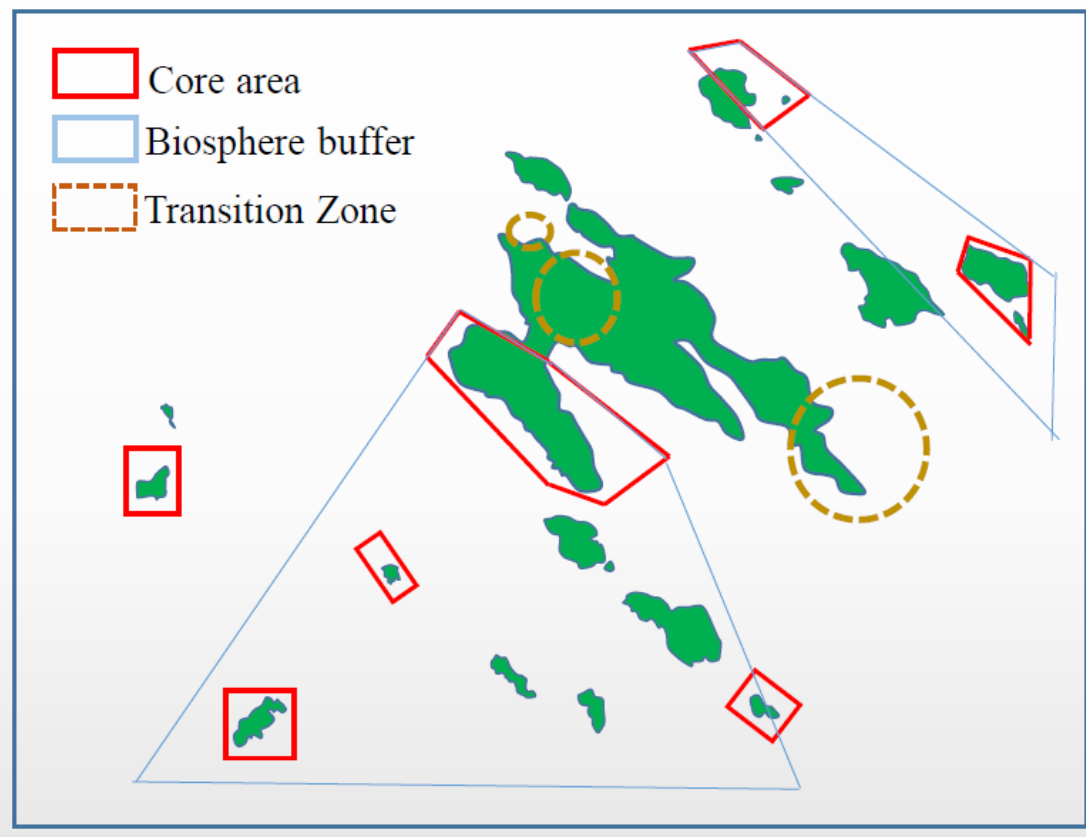


Figure 2

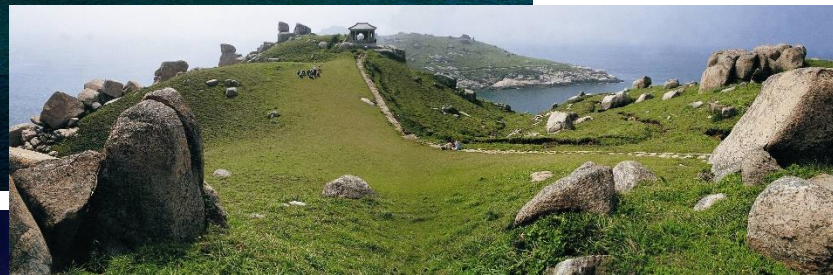
The Position and Functional Regionalization of Nanji Islands BR

Biodiversity in Nanji Islands

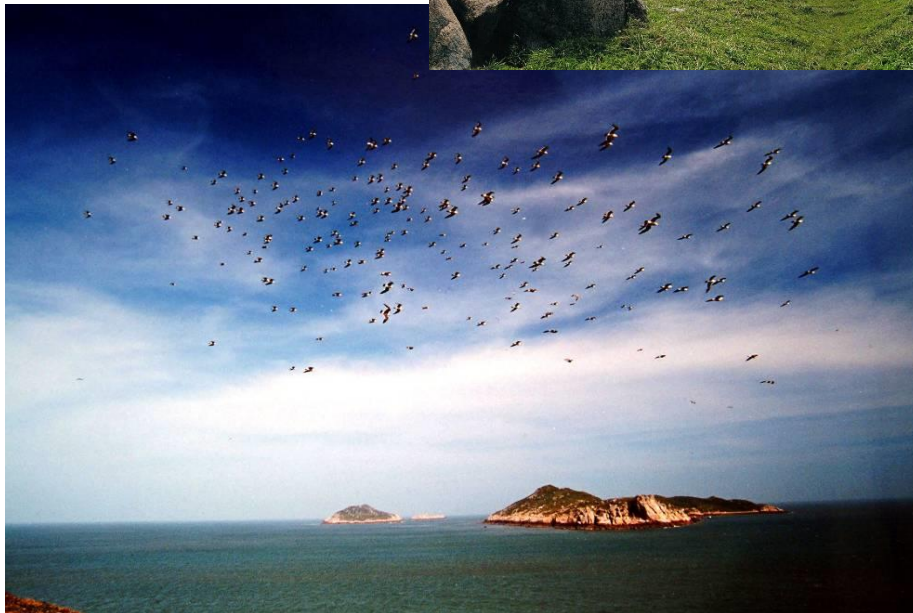


Biodiversity in Nanji Islands





Scenic spots in Nanji Islands



“A Kingdom of Shellfish and Algae”

◆ Shellfish:

- 427 species, 15% of known species of shellfish in China
- 36 species are endemic species

◆ Algae:

- 637 species (seaweeds 178 species, microalgae 459 species), 25% of known species of algae in China
- reported 3 new species and 22 rare species

(Yu et al. 2011)

2 Challenges in Nanji Islands

Coralline algae bloom



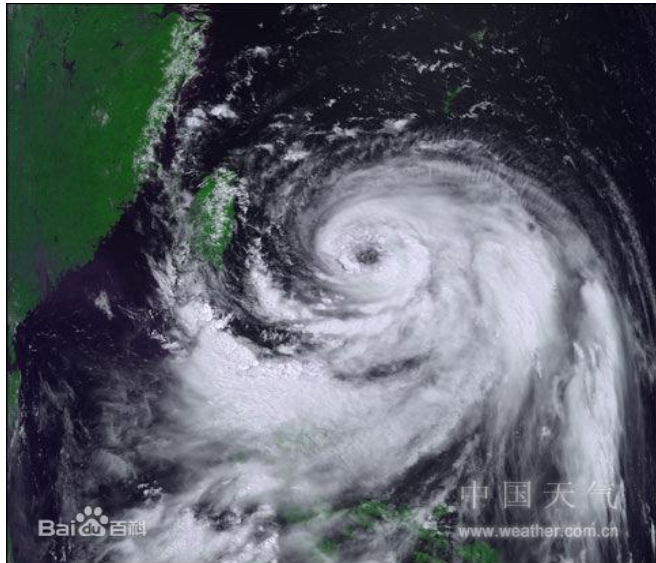
Red tide



Poaching



Typhoon



3 Experiences of MPA management

3.1 Sustainable management of
resources

3.2 Sustainable management of
human activities

3.3 Blueprint of MPAs network

3.1 Sustainable management of resources

Ecological restoration project



Wind/Solar Power and Infrastructure Construction



3.2 Sustainable management of human activities

Moderate development of Tourism

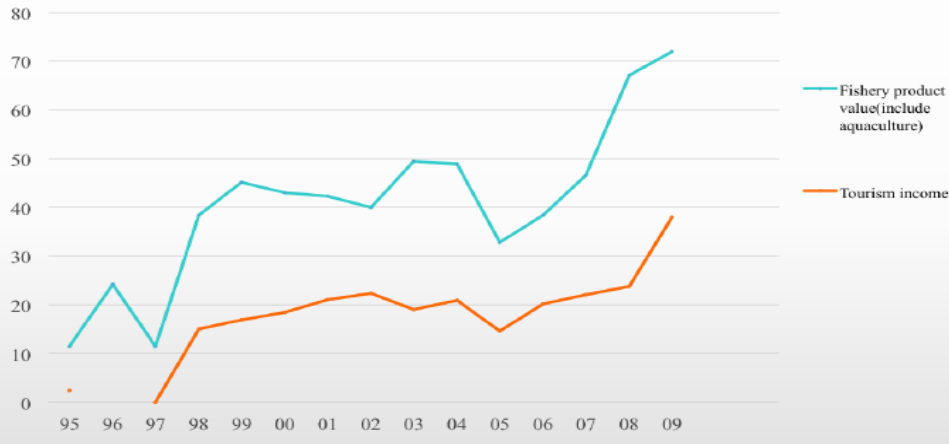


Control of the fishery and aquaculture

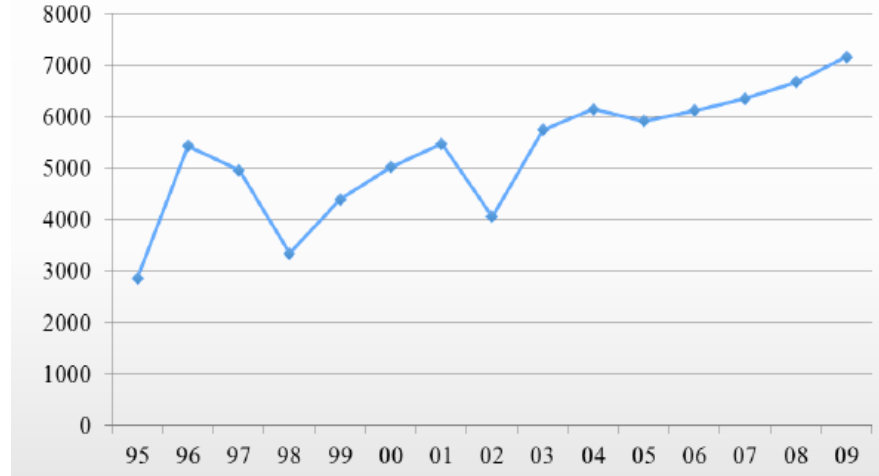


Benefits and contributions to local communities

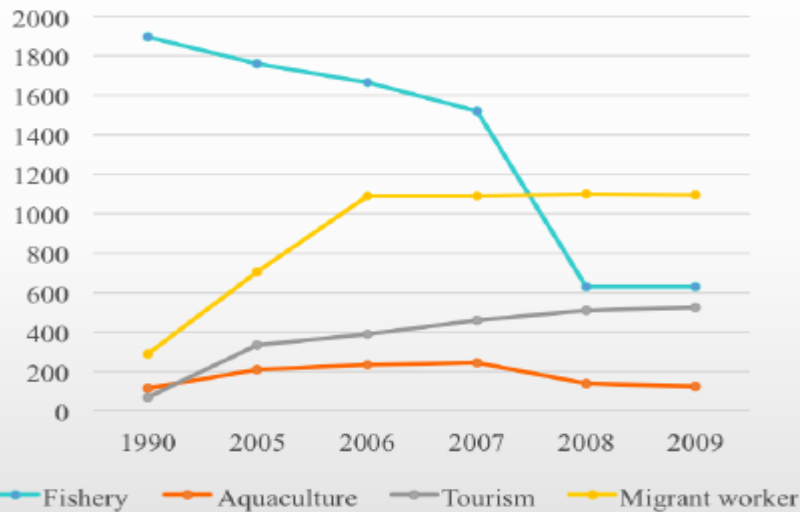
Growth of aquaculture and tourism (million yuan)



Average annual incomes of local residents (yuan)



Working population by occupation



- The rural economic structures Changed
- The income increasing
- The population working in fishery and the risk of random/illegal collection reduced

Education of marine biodiversity protection

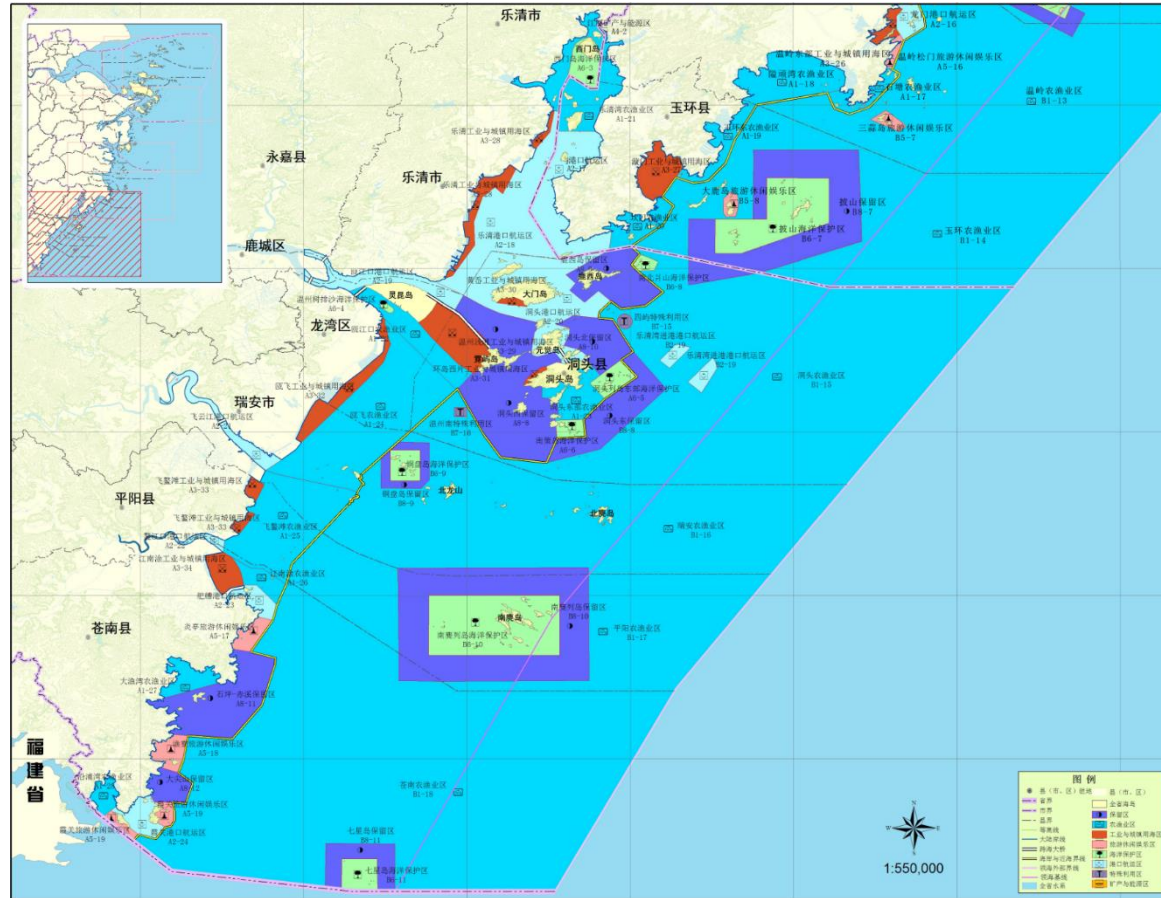


Nanji Islands as
education center of
marine biodiversity

A new marine
research and
education center
is building



3.3 Blueprint of Zhejiang-Fujian Coastal Islands MPAs Network



Based on the species distribution, we propose a blueprint of Zhejiang-Fujian Coastal Islands MPAs Network.



Pishan Mount

Nanbeipanshan Mount

Tongpan Island

Nanji Islands

Qixing Islands

Taishan Islands

Dakunyu Island

Fuying Island

Xiyang Island

Dongyin Island

Mazu Island

云和县

景宁畲族自治县

青田县

永嘉县

乐清市

玉环县

温州市

龙湾区

洞头县

文成县

瑞安市

平阳县

苍南县

泰顺县

寿宁县

福鼎市

柘荣县

周宁县

福安市

G15

宁德市

罗源县

霞浦县

连江县

福州市

马尾区

25公里

Thanks for your attention!
Welcome to Nanji Islands!

