

Shankou Mangrove National Marine Nature Reserve

(山口红树林保护区)



一、 Mangrove National Marine Nature Reserve ecological features

what's it



Mangroves are a species of tropical tree that grows in seaside.

Forest is not just in mountains, Mangrove is also named forest on sea because of resistance typhoon and Weakened tsunami ,Protection of our home.

important trees



Bruguiera gymnorrhiza(木榄)



Kandelia candel (Linn.) Druce



秋茄



Rhizophora stylosa

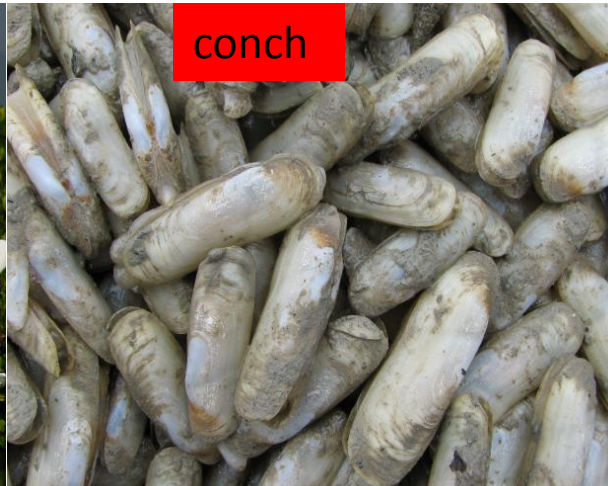
The best preserved *Rhizophora stylosa* is Yingluogang Branch Zone, which covers an area of more than 260 hectares. *Rhizophora stylosa* in Yingluogang grow tall and straight with twisted roots and gnarled branches, and therefore Yingluogang is a key area of the Reserve.

however it's not just the tree

That are a lot of organisms in the mangrove, which will be the paradise of the organisms, It not only provides an ideal habitat for Marine organism and birds, but also provides them with rich food.



Egret



conch



crab



Sipunculus nudus



fish

horseshoe crab



Bird migration



Foraging



Platalea minor

Globally endangered species, which will be found in Shankou mangrove



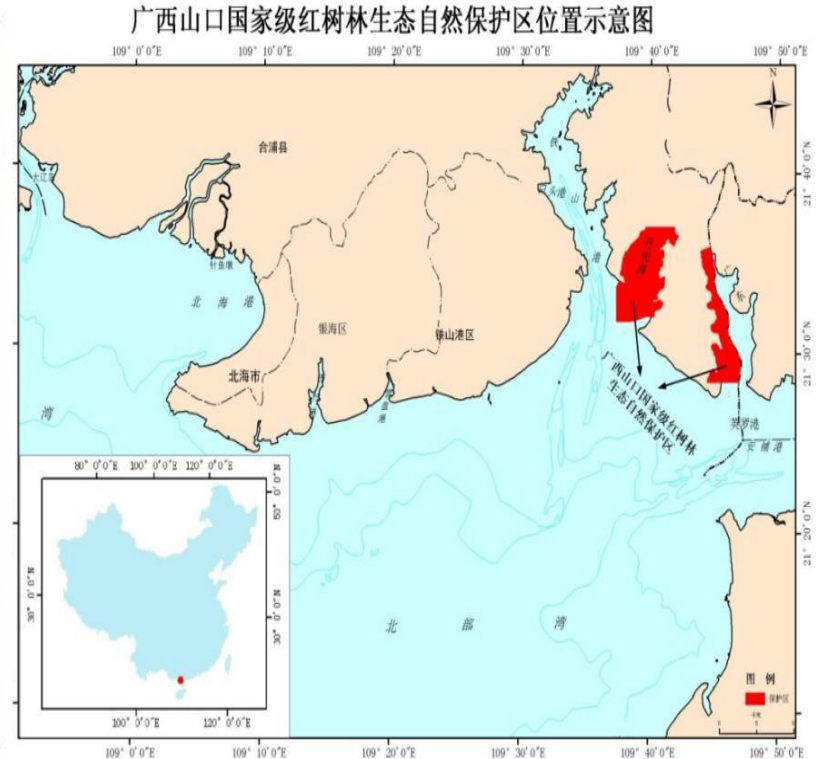
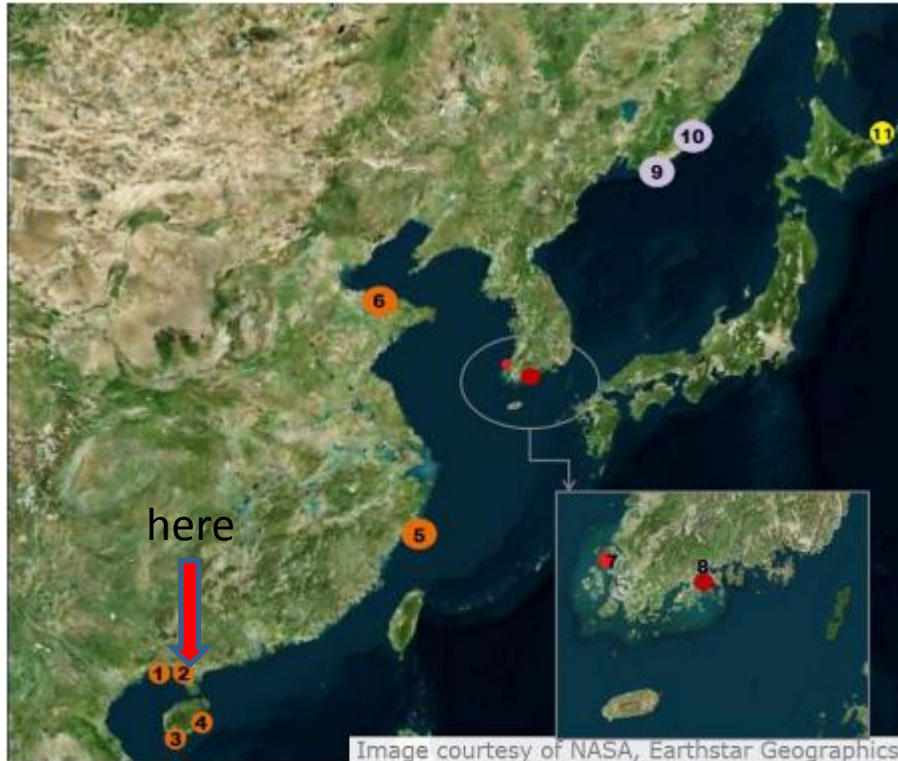
It's also the living place of Dugong

Shankou Mangrove Reserve is of regional and global significance in conserving marine biodiversity because:

- 1、 It has the largest patch of pure *Rhizophora stylosa* forest and *Bruguiera gymnorhiza* forest at their climax of succession;
- 2、 It is a stopover site of black face spoonbill and other migratory birds;
- 3、 It is a gene pool of mangroves in China;
- 4、 It offers good opportunity for study and research into impact of climate change on mangroves, which is found to expand seaward and shrink landward as the inner seabed is ascending;
- 5、 It is a compact area where mangroves, seagrasses, and *Spartina* co-exist.

二、 Mangrove National Marine Nature Reserve

Location



Shankou Mangrove National Nature Reserve consists of two areas on either side of the Shatian Peninsula, southeast of Hepu County, Guangxi Zhuang Autonomous Region. The Reserve, covering a total area of 8,000 hectares, stretches along the coast for some 53 kilometers.

Achievements

- **Mangrove National Marine Nature Reserve found in 1990**
山口保护区建于1990年。
- **Join in Chinese Man and the Biosphere Network in 1993**
保护区1993年加入中国人与生物圈网络。
- **Twinning relationship of protected areas with Luke Li Florida Bay National Estuarine Research Reserve of USA in 1997**
1997年与美国佛罗里达州鲁克利湾国家级河口研究保护区建立姐妹保护区关系
- **Was accepted as the member of UNESCO Man and the Biosphere (MAB) network in 2000**
2000年被联合国教科文组织人与生物圈(MAB)保护区网络接纳为成员。
- **Wetlands of International Importance in 2002**
2002年被列为国际重要湿地名录
- **selected as one of the most charming wetland in 2013**
2013年被评选为十大魅力湿地之一。

三、 Management experiences and challenges

Mangroves in the reserve have been managed by observing the rules of conserving mangroves first and using mangroves wisely to achieve sustainable development of mangroves. In the reserve, many efforts have been made to conserve and restore mangroves. Research into mangroves has been carried out and technologies have also been developed for monitoring mangroves. Besides, public participation in mangrove management has been encouraged and international cooperation has been enhanced. Both the efforts and the achievements are highly appreciated. The important roles of the reserve in conserve biodiversity of international significance are widely recognized.

1.The clan chief network

- To strengthen the management of Shankou Mangrove Reserve, public participation in the management of the reserve has been encouraged with network of clan chiefs of local villages being formed.

clan chiefs of local villages
being formed ,for examle Shankou
town chief. We will hold the
meeting every year.



Development of alternative livelihood for local mangrove residents. For example, some ecotourism operation such as boat tour and food retailing are performed by local villagers for subsistence



Combine traditional festival to publicity



The use of Chinese traditional festival, hold the activities, such as planting trees Arbor Day, Mid-Autumn Festival to watch the mangroves, as well as using the Internet essay.

2.NGO activities



Encouraged NGOs to carry out activities in the reserve to enhance public involvement in management of mangroves.



NGO activities

Science advocacy

红树林生态系统组成

红树林生态系统由红树植物、动物、微生物、土壤、水、空气、阳光、潮汐等多种因素组成。红树植物是红树林生态系统的主体，它们通过特殊的生理结构和生长方式，适应了海水、盐水和缺氧的环境。红树林生态系统具有防风消浪、促淤保滩、固碳储氧、净化水质、防风固沙、护岸护堤、调节气候、维护生物多样性等多种功能。

红树林的直接用途

- 木材、薪材、燃料木炭
- 绿色食品(如白茅根、海菜、水葫芦、红树植物的根茎)
- 医药(如木薯、海菜、海菜藻)
- 蜜源植物、药用植物和动物药材
- 海洋生物种、珍稀物种繁育

红树林的生态作用

- 防风消浪、促淤保滩、固碳储氧
- 维护生物多样性、保护珍稀物种
- 净化水质、降解污染物、吸收重金属
- 防风固沙、护岸护堤、调节气候
- 维护生物多样性、保护珍稀物种

红树林的生态作用

- 防风消浪、促淤保滩、固碳储氧
- 维护生物多样性、保护珍稀物种
- 净化水质、降解污染物、吸收重金属
- 防风固沙、护岸护堤、调节气候
- 维护生物多样性、保护珍稀物种

人们活动对今后我国红树林生态系统的相对危害值

人们活动对今后我国红树林生态系统的相对危害值

红树林 Mangrove

海草床 Seagrass bed

珊瑚礁 Coral reef

红树林 Mangrove

海草床 Seagrass bed

珊瑚礁 Coral reef

联合国开发计划署/全球环境基金/中国政府
“中国南部沿海生物多样性管理”(S0290)项目

海岸卫士

红 Mangrove 树 林

北海市典型海洋生态系统之一

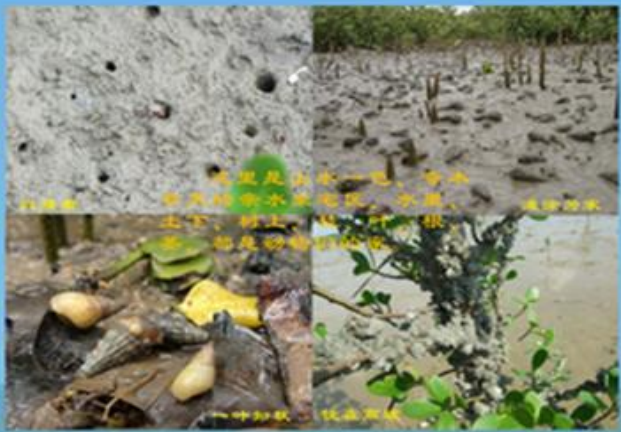
广西红树林研究中心
广西海洋环境与滨海湿地研究中心
Guangxi Mangrove Research Center
Guangxi Marine Environment & Coastal Wetland Research Center

UNDP/GEF/SOA Project on Biodiversity Management in the Coastal Area of China's South Sea

北海市红树林分布



上世纪50年代初期北海曾有红树林4730公顷，现已存3133.3公顷，占广西现有红树林总面积的37.3%，居广西沿海地方之首。主要有河口、海湾和开流海岸等3种类型：典型的河口红树林主要分布在廉州湾，是广西最大入海河流——南流江的河口区，红树林面积603.8公顷，海湾红树林是北海红树林的主体，集中于铁山港、开流湾和钦南港，这3种红树林面积合计1780公顷，海湾沿岸淡水注入稀少，物种丰富，保存良好。开流湾海岸红树林主要分布在北海市东海岸的大冠沙，面积约70公顷，其余600多公顷是散布在其他小型河口海湾。600多公顷只算是“零钱”！？会少吧！？要知道福建一亩的红树林也就600多公顷而已！



红树林中的动物



失去了红树林.....
也许就失去了这些美味！

Drawing Competition

作品：红树爷爷

学校：那潭小学五
小班刘芝兰



3.Mangrove replanting activities



30ha mangroves were planted in Natan village by the villagers out of self-motivation in an attempt to prevent shrimp ponds from the threat of tidal surge.

三、 suggestion

- 1、 communicate each other to share experise .
- 2、 Hold the meeting evry two years for each MPA managers to keep contact.
- 3、 Strengthen personnel training, if possible we could hold the training in each MPA to study together .
- 4、 welcome to Shankou reserve ,and help us to build up the NGO works ,also the Community co management .

thank you !

welcome all of you come to Shankou
Mangrove Reserve