

# Co-construction and sharing of large-scale green spaces

—Take Circular Ecological Zone and Longquan Mountain Urban Forest Park as examples

National Certified Urban-Rural Planner  
Lead Planner of Chengdu Institute of Planning & Design  
CHEN Jianbin



成都市规划设计研究院  
CHENGDU INSTITUTE OF PLANNING & DESIGN  
成都市天府公园城市研究院  
CHENGDU TIANFU PARK CITY RESEARCH INSTITUTE

2024.10

# Overview of Chengdu

"Park City" ---- Exploring a sustainable urban development model that adapts to the cities in China nowadays



**Two mountains**  
**Two nets**  
**Three rings**

Circular Ecological Zone

Longquan Mountain Urban Forest Park

Size: 14,000 square kilometers  
Population: 21 million  
Features: plain , hilly

# Case 1: Circular Ecological Zone

Circular Ecological Zone,  
A beautiful "green necklace" inlaid on the plain of Chengdu



"One link" + "seven wedges"



A large scale ring



187 square kilometers



Circular Ecological Zone



**Abundant natural elements such as forests, fields, grasses, and water**  
**The interweaving of ecological, agricultural, and construction "three types" of spaces**



# Construct a multi-dimensional urban green ring



## Protection

1. Farmland Protection
2. Ecological Restoration



## Connection

1. Integrate into the city
2. Build a greenway system



## Sharing

1. people oriented
2. Functional integration



## Resilience

1. Urban Sponge
2. Emergency shelter

Protection

Protect quality cultivated land and maintain farmland habitat.

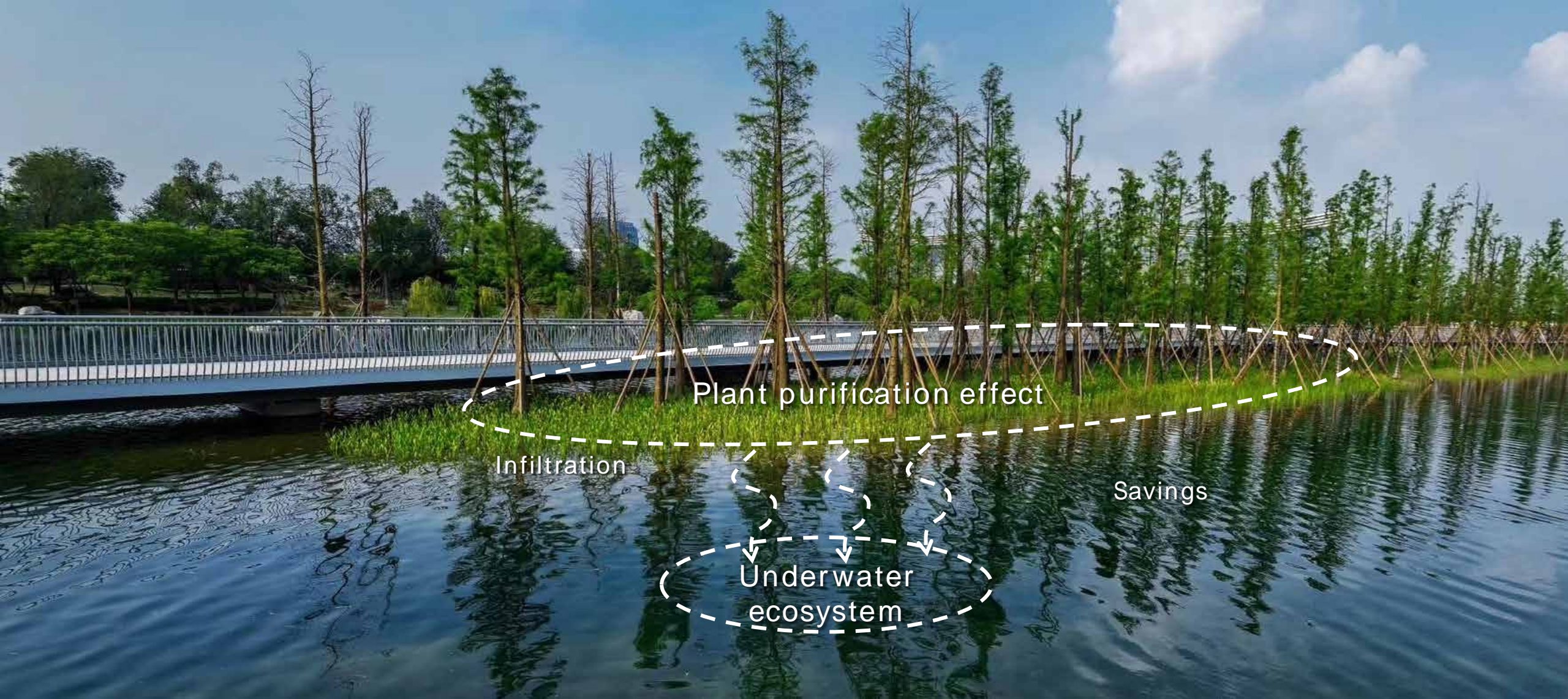


Carry out comprehensive land consolidation,  
Focus on building high standard farmland,  
Develop modern urban agriculture

# Protection

## Restore the ecological environment

Plant water purification plants, create aquatic and semi-humid plant habitats, improve water quality, improve water purification and rainwater regulation and storage



Lucid waters and lush mountains are invaluable assets.

## Ecological maintenance



The level of biodiversity continues to improve

Observation of 30 species of nationally protected animals

The average temperature in this area decreases by 1.0-2.5 in summer



# Connection

build a multi-dimensional greenway system to promote the continuous connection between parks and cities



The 100km ring City greenway has been completed

# Leading a green and low-carbon lifestyle

## Greenway Network

The first 100 kilometer accessible circular greenway in the central urban area of a mega city  
China's first urban greenway professional cycling race route  
Holding over 300 cycling events  
Over ten million riders per year

# Sharing

*Implant diverse scenarios such as sports, cultural creativity, leisure and recreation, and dynamic consumption*



Sports



Culture



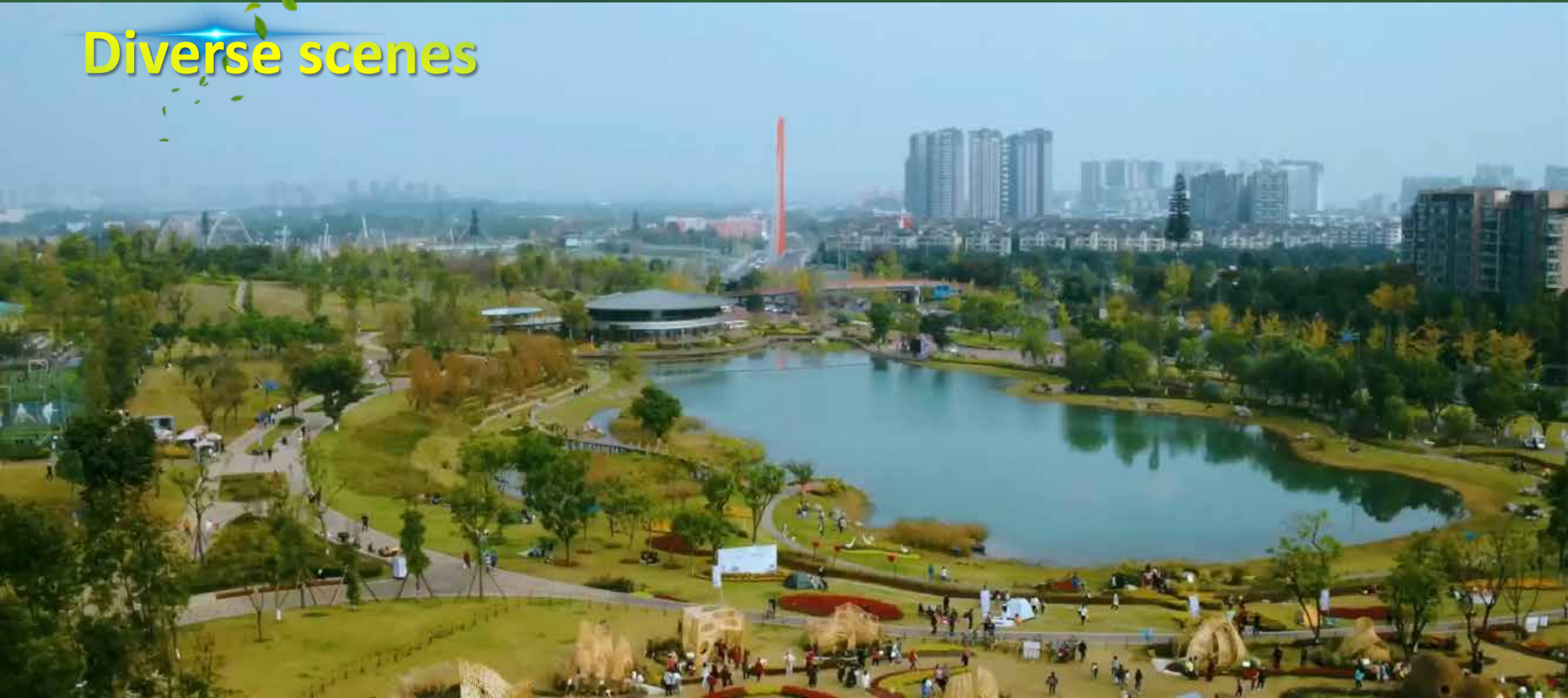
Exhibition



Leisure

Provide the most inclusive green welfare for citizens

**Diverse scenes**



# Resilience



Improve the transportation network system



Build Infrastructure serving the city



Construct urban sponge to absorb rainwater and floodwaters



Ensure smooth emergency evacuation routes for urban safety



Clear hierarchical layout of emergency shelter facilities

## Case 2: Longquan Mountain Urban Forest Park

Longquan Mountain Urban Forest Park

An aerial photograph of a mountainous region. A large area of the mountain is outlined in green, indicating the park's boundary. A white line with a dot at the end points from the text label to the center of this green-outlined area. The surrounding landscape includes urban areas with buildings and roads, agricultural fields, and a winding river.

- Large scale suburban parks near Chengdu
- Area 1275 square kilometers
- Diverse terrain, abundant species, and diverse cultural landscape resources
- Important nodes of major migratory bird routes in the world

# Create an eco-friendly park that is loved by citizens and tourists



Ecology

1. Vegetation restoration



Sponge

1. Drainage corridor



Accessibility

1. Can enter and participate



Intelligent

1. Smart Management Platform

# Ecology

ρ Vegetation restoration in ecological core protection areas

Before



After





# Ecology

## Protecting and enhancing biodiversity



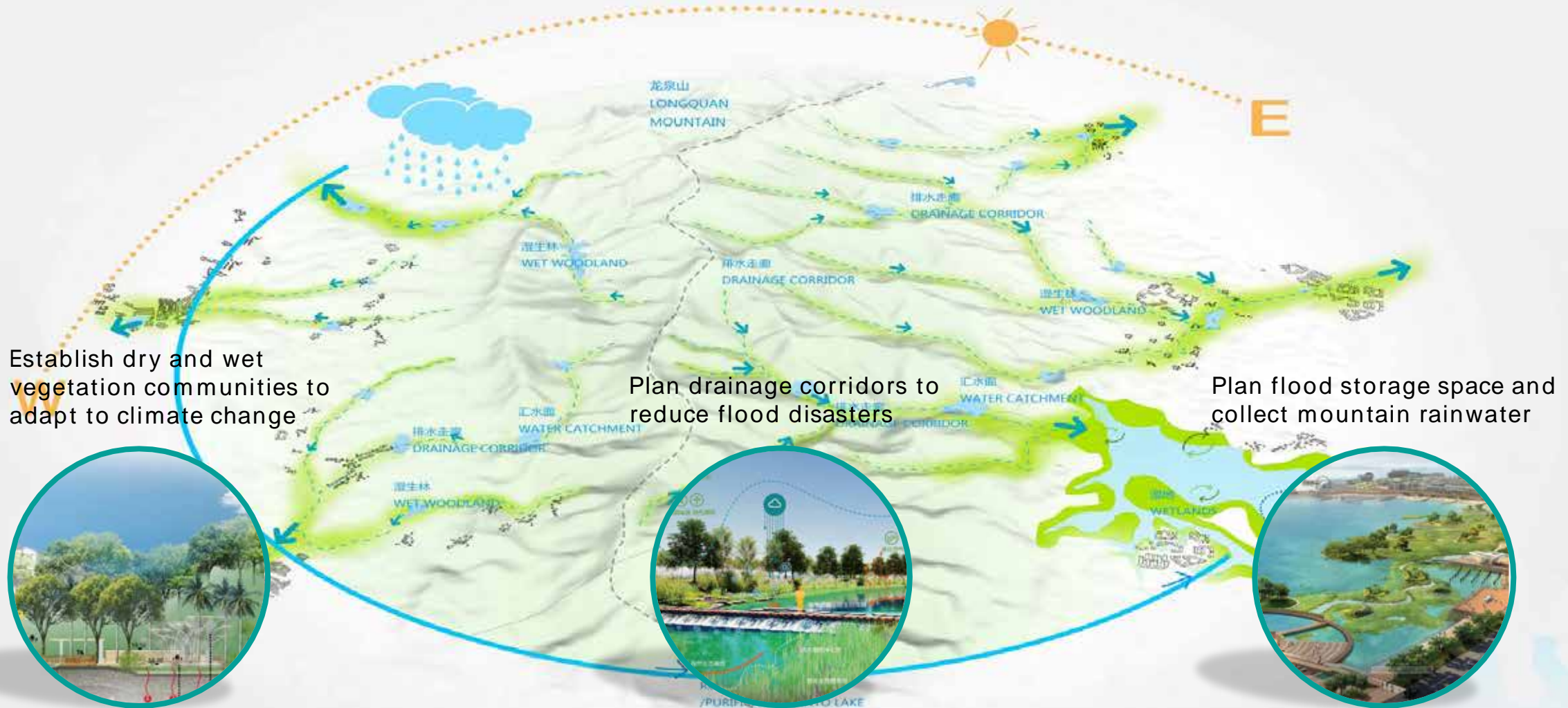
### Ecological value highlights

- Accumulated afforestation of 280000 acres
- 571 new recorded species of animals and plants have been added
- Annual increase of over 100000 tons in carbon sequestration



# Sponge

Based on the natural terrain of the mountain, scientifically plan the mountain drainage corridor and multi-level flood storage space, overlay the wetland forest system, ecologically treat the drainage corridor, and turn Longquan Mountain into a large sponge that absorbs rainwater.



# Unbounded

## Creating an International Sports Event Destination

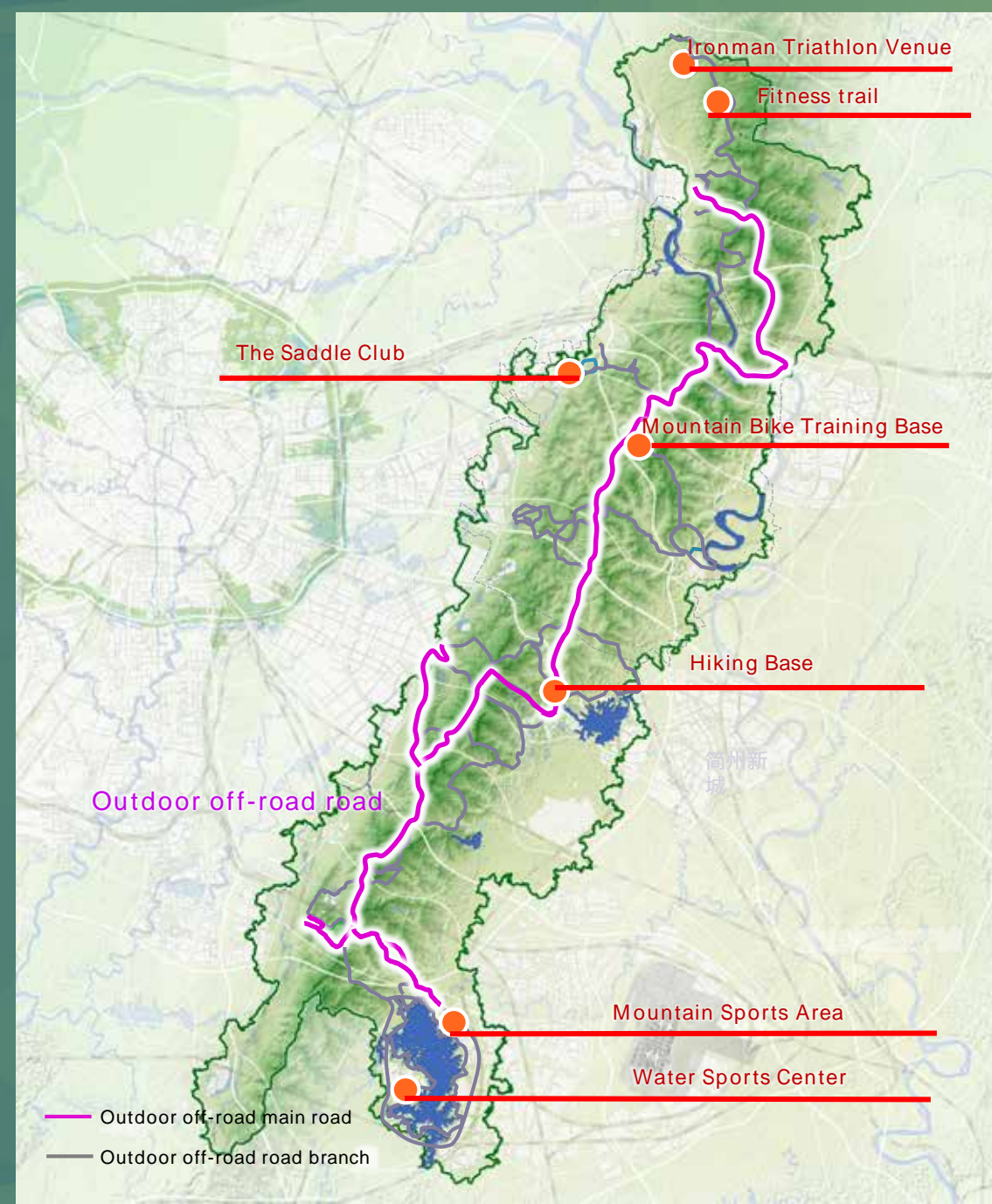
### Outdoor off-road road



### Mountain Sports



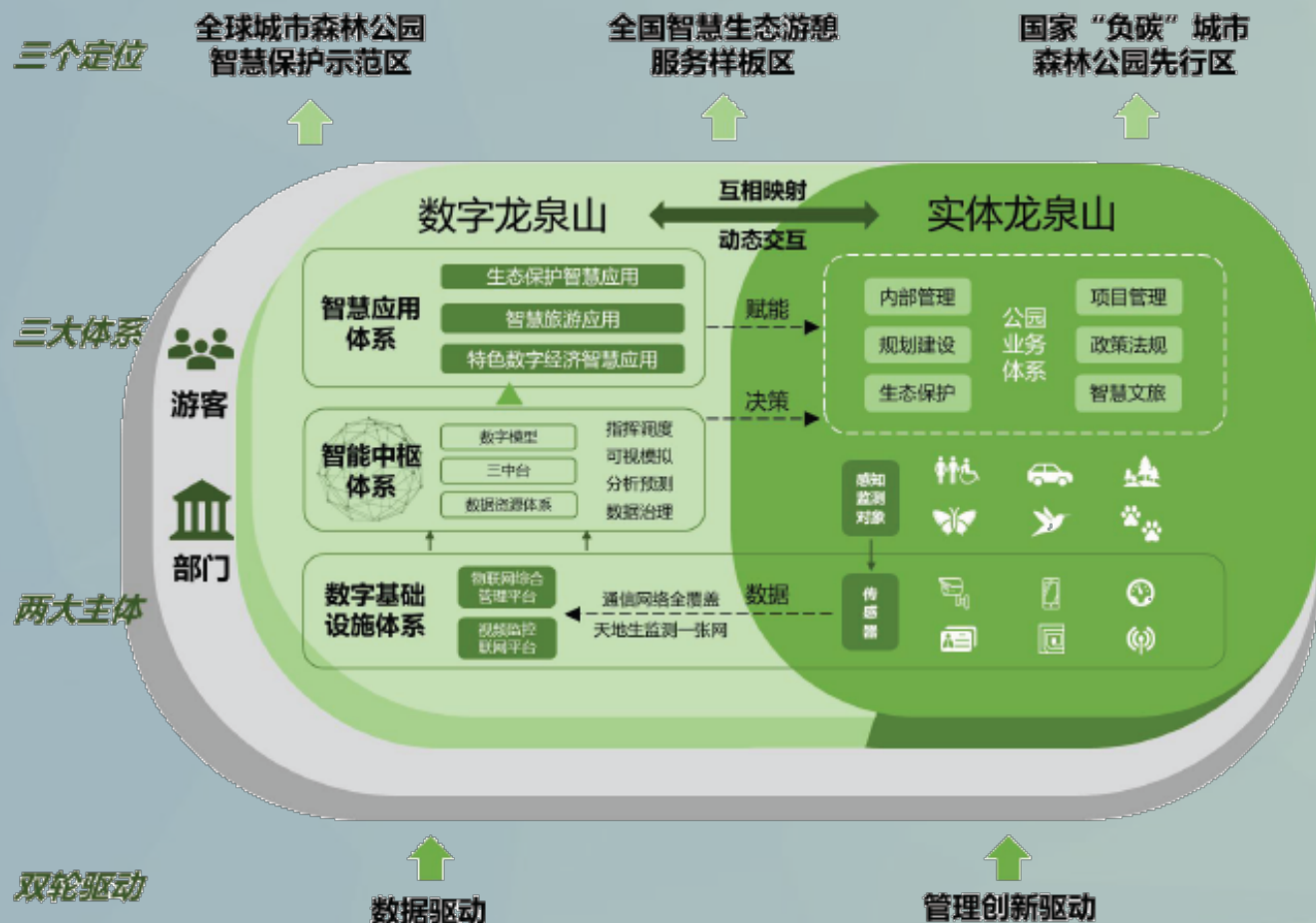
### Water Sports



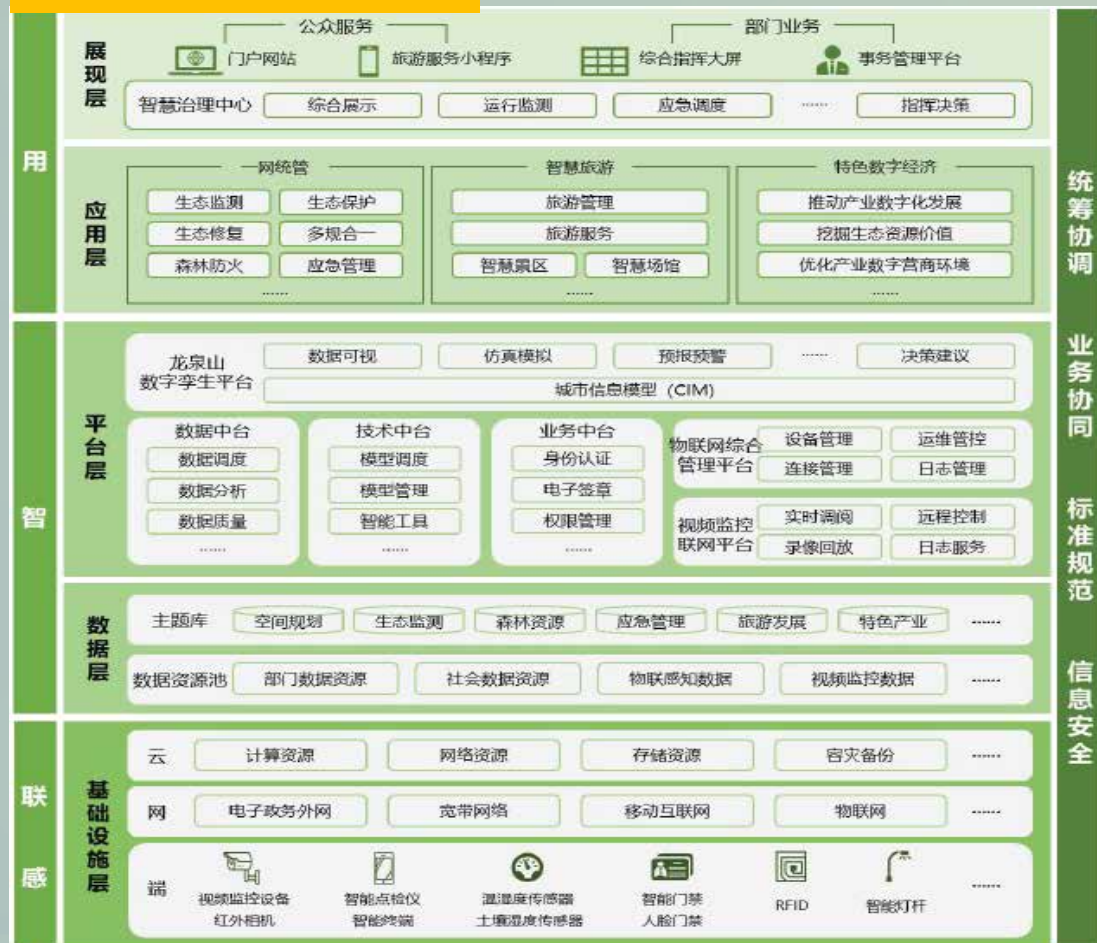
# Intelligent

## Building a twin platform for intelligent management of urban forest parks

### Overall framework



### Technical framework



# Promote co-benefit

# Introduce regulations to promote consensus among various districts

## 成都市环城生态区保护条例

时间:2013-04-27 来源:四川人大网

[字号:大 中 小]

2012年10月19日成都市第十五届人民代表大会常务委员会第三十五次会议通过  
2012年11月30日四川省第十一届人民代表大会常务委员会第三十四次会议批准

### 目录

- 第一章 总则
- 第二章 规划控制和土地利用管理
- 第三章 生态环境建设和保护
- 第四章 监督检查
- 第五章 法律责任
- 第六章 附则

### 第一章 总则

第一条 为了加强环城生态区保护,规范环城生态区规划、建设和管理,推进世界生态田园城市建设,根据《中华人民共和国城乡规划法》、《中华人民共和国土地管理法》和《中华人民共和国环境保护法》等法律、法规,结合成都市实际,制定本条例。

第二条 本条例适用于环城生态区的规划、建设、管理及其监督活动。

第三条 本条例所称环城生态区,是指由成都市城市总体规划确定的,沿中心城区绕城高速公路两侧各五百米范围及周边七大楔形地块内的生态用地和建设用地所构成的控制区,其具体范围由环城生态区总体规划确定。

第四条 环城生态区的保护,应当遵循生态为本、科学规划、统筹建设、严格管理的原则,确保生态环境资源永续存在,实现现代化城市形态、高端化城市业态、特色化城市文态、优美化城市生态相结合,促进城市全面协调可持续发展。

第五条 市人民政府应当将环城生态区的保护和利用纳入城市总体规划和土地利用总体规划,制定各类相关规划和配套政策,建立规划、土地、林业园林、环境保护、水务等方面的统一管理及监督检查制度,统筹协调解决环城生态区保护工作中的重大事项。

有关区县人民政府应当按照各自职责,负责本辖区内的环城生态区保护工作。

第六条 市城乡规划行政主管部门负责环城生态区总体规划、控制性详细规划的编制、实施和监督管理工作。

市土地行政主管部门负责环城生态区的土地利用专项规划编制、土地用途管理等工作。

市建设行政主管部门负责环城生态区的生态建设实施计划编制、基础配套设施建设等工作。

农业、林业园林、环保、水务、发展改革、财政、城管、安监、交通、经济和信息化等行政主管部门按照各自职责负责相关工作。

## 成都市龙泉山城市森林公园保护条例

成都人大 www.cdrd.gov.cn 浏览字号: 大 中 小 打印本页 关闭窗口

2018年12月27日成都市第十七届人民代表大会常务委员会第六次会议通过,2019年3月28日四川省第十三届人民代表大会常务委员会第十次会议批准

### 目录

- 第一章 总则
- 第二章 规划控制与土地利用
- 第三章 生态保护与管理
- 第四章 法律责任
- 第五章 附则

### 第一章 总则

第一条 为了加强成都市龙泉山城市森林公园(以下简称城市森林公园)生态保护,实现自然资源持久保育和合理利用,高质量建设全面体现新发展理念的城市,根据《中华人民共和国环境保护法》《中华人民共和国森林法》《中华人民共和国城乡规划法》等法律法规,结合成都市实际,制定本条例。

第二条 本条例适用于城市森林公园的规划、建设、管理及其监督等活动。

本条例所称城市森林公园,是指位于四川省龙泉山脉成都段,四至界限东经104°5'38"至104°36'17"、北纬30°12'29"至30°57'14"内,规划范围1274.8平方公里的城市中央公园。其中,龙泉驿区管辖区284.9平方公里,青白江区管辖区125.2平方公里,金堂县管辖区354.3平方公里,简阳市管辖区238.8平方公里,天府新区成都直管区139.7平方公里,高新区管辖区131.9平方公里。

城市森林公园具体界限由城市森林公园总体规划划定。

第三条 城市森林公园的保护应当遵循科学规划、生态优先、分区管控、合理利用的原则,促进人与自然和谐相处,实现生态、经济和社会效益相统一。

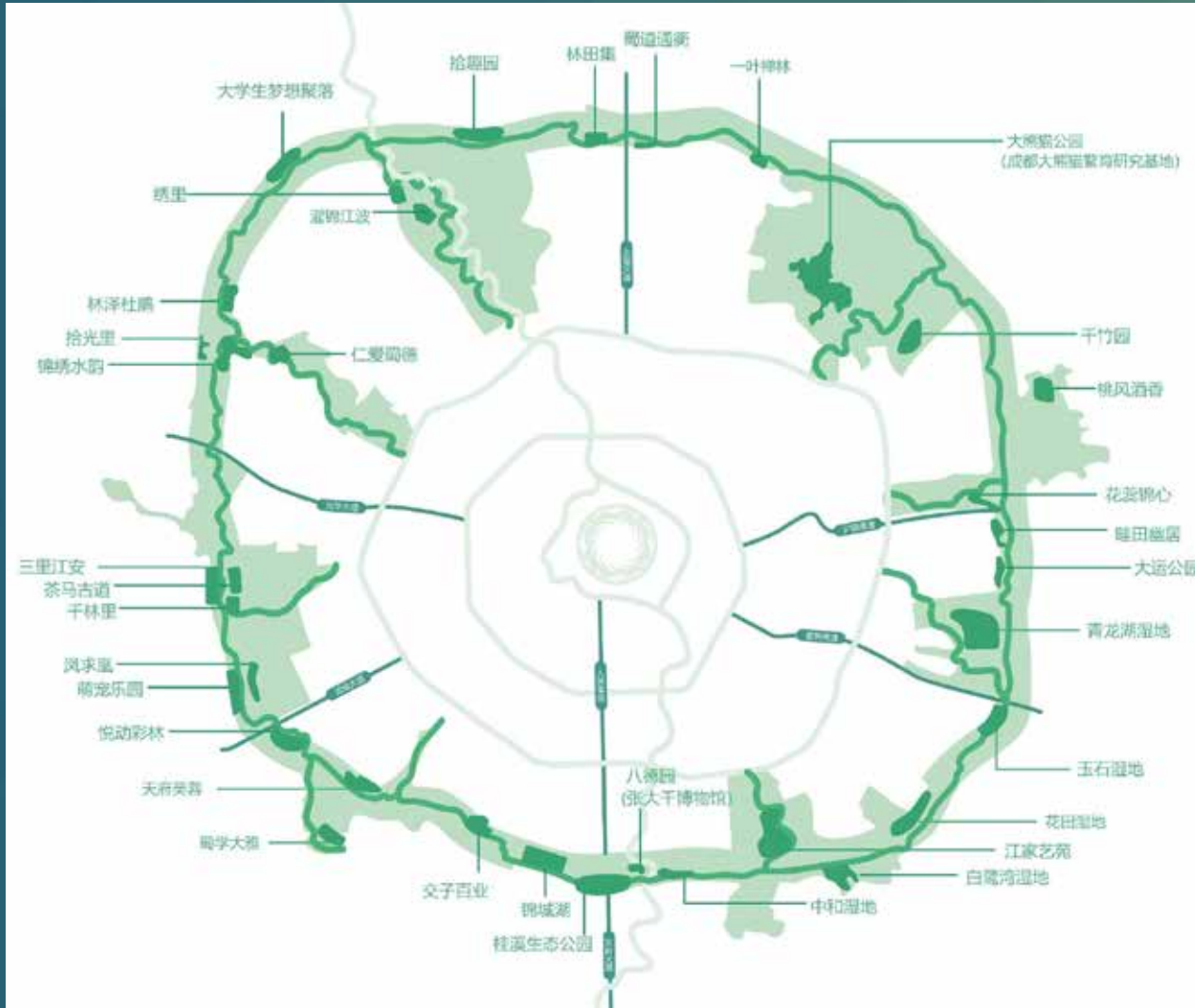
第四条 市人民政府设立的城市森林公园管理机构,按照市人民政府的授权,负责城市森林公园保

Regulations on the Protection of Ecological Zones

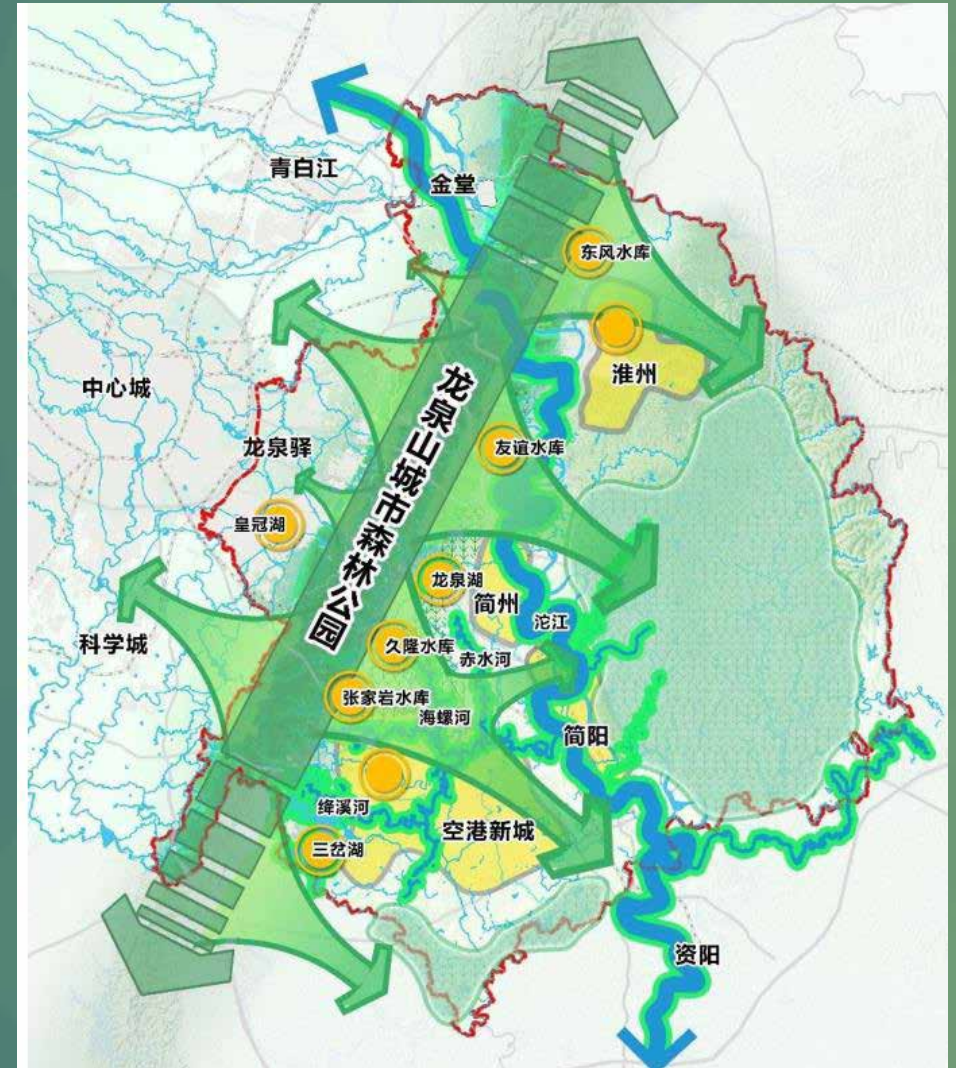
Regulations on the Protection of Longquanshan Urban Forest Park

Promote co-benefit

Make a special plan to form a top-level design



Special Plan for the Ecological Zone

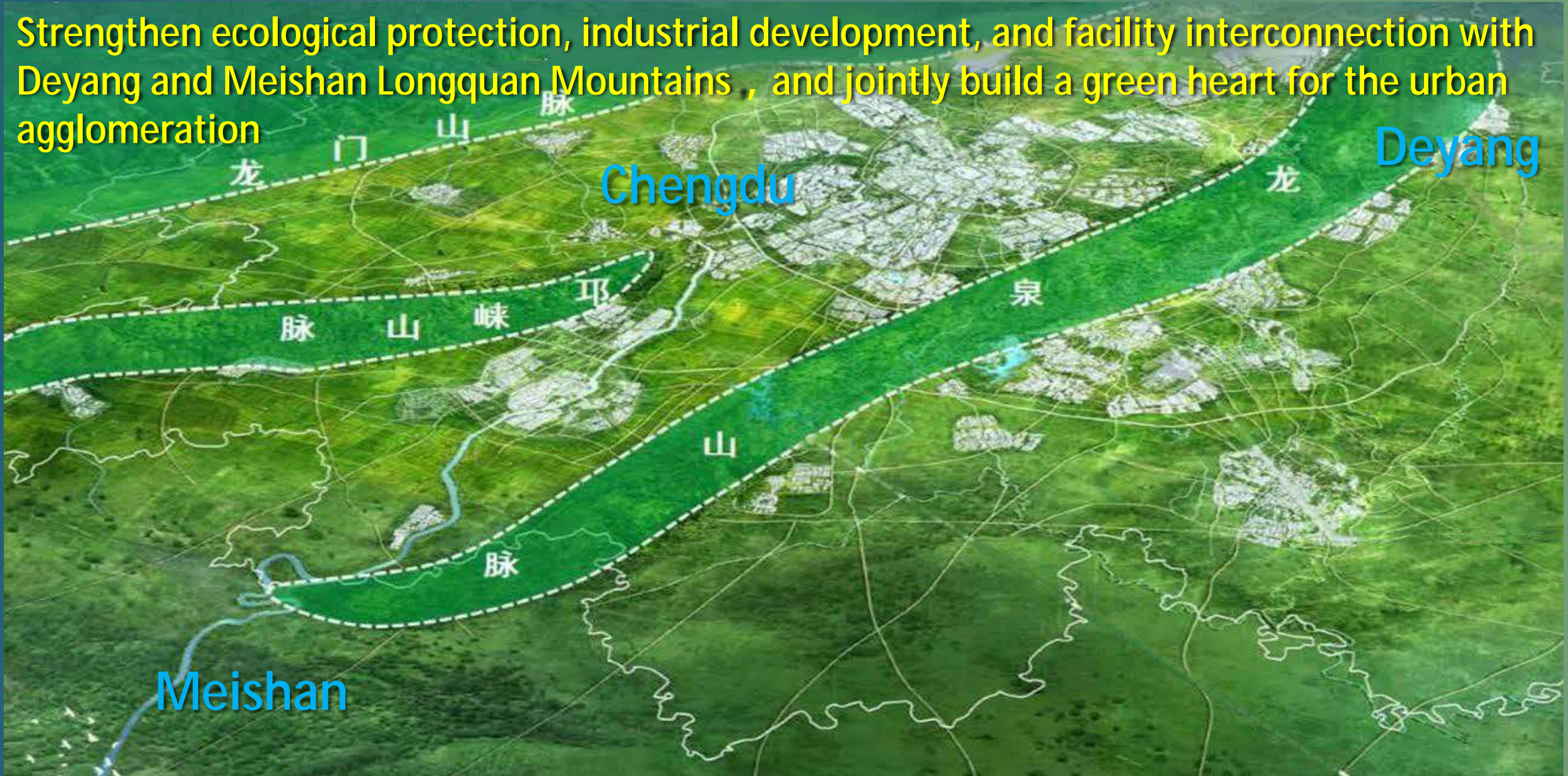


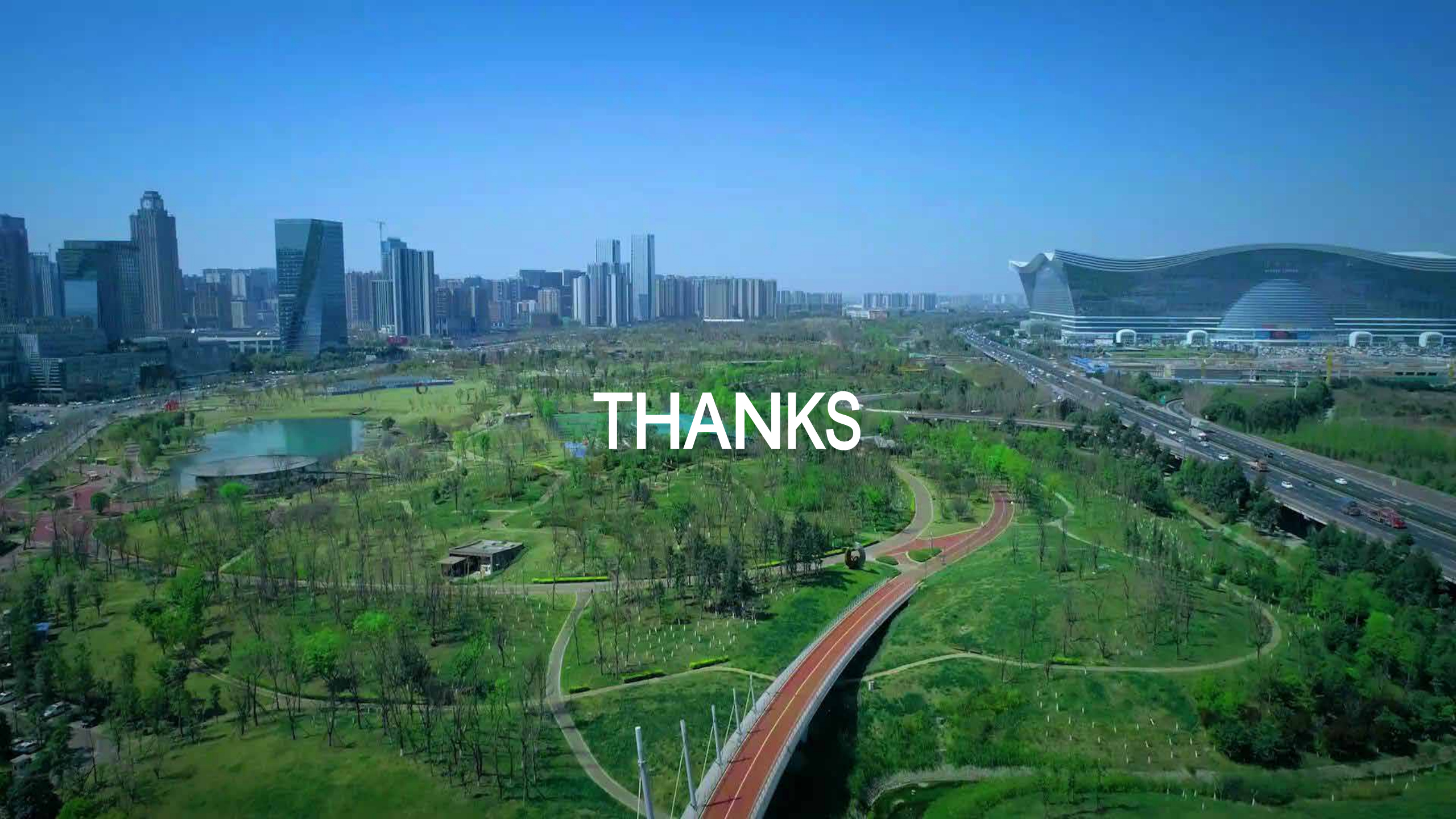
Special Plan for Longquanshan Urban Forest Park

Promote co-benefit

Strengthen regional collaboration

Strengthen ecological protection, industrial development, and facility interconnection with Deyang and Meishan Longquan Mountains, and jointly build a green heart for the urban agglomeration





THANKS